

# PORTACOUNT® PRO+ RESPIRATOR FIT TESTER MODEL 8038

RESPIRATOR FIT TESTING  
YOU CAN TRUST

No other fit tester can quantitatively fit test all types of respirators—gas masks, SCBAs, respirators, even N95 disposable (filtering-facepiece) respirators. The PortaCount® Pro+ Model 8038 Respirator Fit Tester eliminates the guesswork associated with tedious and error-prone qualitative fit test methods. If the mask requires fit testing, count on the PortaCount Pro+ fit tester to provide the fastest, easiest and best OSHA-accepted fit test method.



## PortaCount Pro+ Respirator Fit Tester Kit Includes

- + Carrying case
- + AC adapter
- + Alcohol supply (enough for ~240 hours of operation)
- + FitPro+™ Fit Test Software on CD
- + USB computer interface cable
- + Particle Generator (shipped separately)
- + Operation and service manual

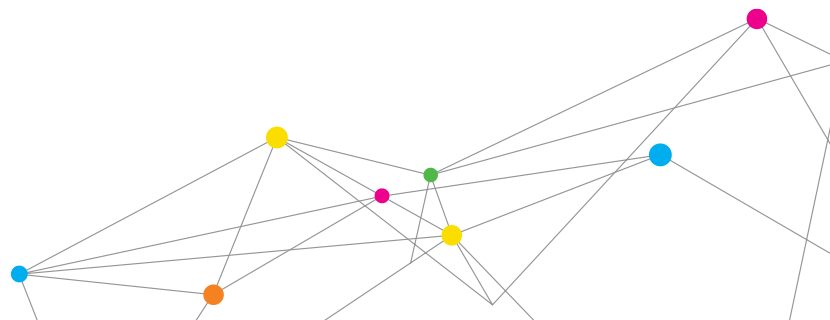
For additional software information, see the TSI FitPro+ Fit Test Software Specification Sheet.

## Features and Benefits

- + Greater simplicity with the built-in N95-Companion™ technology
- + Stand-alone operation—no external computer required
- + Reduces need for an external particle generator
  - Redesigned DMA for enhanced performance
  - Ability to perform N95 fit testing with much lower ambient particle concentrations
- + Color touch screen
- + OSHA-compliant for all respirators, including N95
- + Measures fit factors greater than 10,000
- + Switch between different respirator types in under a minute
- + Automates fit testing with FitPro+ Fit Test software
- + Software prints fit test cards with fit test report or on ID cards



UNDERSTANDING, ACCELERATED



# SPECIFICATIONS

## PORTACOUNT® PRO+ RESPIRATOR FIT TESTER MODEL 8038

### Fit Factor Range

1 to greater than 10,000, 1 to 200 for N95 masks

### Typical Fit Factor Accuracy

±10% of reading

### Respirator Facepieces that can be Fit Tested

Full-face elastomeric  
Half-face elastomeric  
NIOSH series-100 filtering-facepiece  
NIOSH series-99 filtering-facepiece  
NIOSH series-95 filtering-facepiece

### Fit Factor Measurement

Direct measurement of fit factor ( $C_{out}/C_{in}$ )\*

### Dimensions

6.75 in. x 8.5 in. x 9.5 in. (17 cm x 22 cm x 24 cm)

### Weight

Unit Only	6.8 lb (3.1 kg)
With Standard Accessories and Case	18 lb. (8.2 kg)

### Power

Autosensing 100 to 250 VAC, 50 to 60 Hz

### Flow Rate

Sample	350 cm <sup>3</sup> /min
Total	1000 cm <sup>3</sup> /min (nominal)

### Temperature Range

Operation	32 to 100°F (0 to 38°C)
Storage	-40 to 160°F (-40 to 70°C)

### Alcohol

Hours Per Charge	6 hours at 70°F (21°C)
Alcohol Type	99.5%+ reagent grade isopropyl

### Carrying Case

Dimensions (HWD)	9 in. x 13.7 in. x 19.5 in. (23 cm x 34.8 cm x 49.5 cm)
------------------	--

### Pass/Fail Setting

User-selectable: 0 to 10,000

### Factory Recalibration Interval

One year

### Warranty

Two years on workmanship and materials

### Minimum PC Hardware Requirements for FitPro+ Fit Test Software

Windows® XP, Windows 7 (32 and 64 bit), or Windows 8 (32 and 64 bit) operating system  
Microsoft.Net version 4 (installation software will install Microsoft.Net if necessary) **Note** – An internet connection is required to install Microsoft.Net  
≥ 1 GHz process  
≥ 12080 x 800 screen resolution monitor  
500 MB free space on hard drive  
1 free USB port  
CD-ROM reader or internet connection (to install the software)

### Optional Accessories

Mask Sampling Adapters for select respirator models

\*Mask leakage is measured simultaneously while test subject moves and breathes.

Model 8038 PortaCount® Pro+ Respirator Fit Tester is patented under U.S. Patent No. 6,125,845.

PortaCount, TSI, and the TSI logo are registered trademarks, and FitPro+, and N95-Companion are trademarks of TSI Incorporated.

Windows is a registered trademark of Microsoft Corporation in the United States and/or other countries.



UNDERSTANDING, ACCELERATED

TSI Incorporated - Visit our website [www.tsi.com](http://www.tsi.com) for more information.

<b>USA</b>	<b>Tel:</b> +1 800 874 2811	<b>India</b>	<b>Tel:</b> +91 80 67877200
<b>UK</b>	<b>Tel:</b> +44 149 4 459200	<b>China</b>	<b>Tel:</b> +86 10 8219 7688
<b>France</b>	<b>Tel:</b> +33 4 91 11 87 64	<b>Singapore</b>	<b>Tel:</b> +65 6595 6388
<b>Germany</b>	<b>Tel:</b> +49 241 523030		