


AQ PRO NEW!



Handheld Indoor Air Quality Monitor

The Latest in Indoor Air Quality Monitoring & Real-Time Data-Logging for IAQ Analysis in Hospitals, Schools, Labs, Airports, and much more

- Multiple Parameters - Up to 6 Total (Customize UP to 3 Gases)
- REAL-TIME Continuous Data-Logging
- Active Internal Sampling Pump
- Compact Handheld Unit
- PC Software & USB Included
- Large Internal Memory (2000)
- Li-Ion Rechargeable Battery
- Barometric Air Pressure
- Protective Magnetic Rubber Boot
- Optional Wireless Printer
- Optional Handheld Probe
- MADE IN USA 



 Bluetooth®

% RH

Temp

Barometric Pressure

CO₂

CO

Formaldehyde

NO₂

SO₂

H₂S

O₂

NO

“Built with Quality in Mind”



 Real-Time Data Logging for Graphs, Data Review, IAQ reports

 Wireless Communications with Computer & Remote Printer

 Light Weight, Durable, Handheld Design

E Instruments International

www.E-Inst.com

P: 215-750-1212 F: 215-750-1399 A: 402 Middletown Blvd, Ste 216 Langhorne, PA 19047

AQ PRO



Specifications

Parameter	Sensor	Range	Res.	Accuracy
Relative Humidity	TFC	5 - 95% RH	0.1% RH	±2% RH
Ambient Temp.	Pt100	-40 - 257°F (-40 - 125°C)	0.1°C/F	±0.4°C (0 - 60°C)
Barometric Pressure	Solid State	260 - 1260 mbar	1 mbar	±2 mbar
Differential Pressure	Bridge	± 40.0 inH ₂ O (±100.0 mbar)	0.1 inH ₂ O (0.25 mbar)	±1% rdg.
Temperature Type K T1	Tc K	0 - 2000°F (0 - 1100°C)	1°C/F	5°F (3°C) or 2% of rdg
Electromagnetic Compatibility	EN 61326-1, Portable Equipment			

AQ PRO ORDERING CODE

Part #: PRO - ___ - ___ - ___

Example: Part #: PRO - C2 - C - H = CO₂, CO, & H₂S

ALL AQ PRO Kits Include:

- Temperature, % Relative Humidity
- Barometric Pressure
- PC Software & USB Cable
- REAL-TIME** Continuous Datalogging
- Bluetooth Connectivity
- Protective Carrying Case
- Continuous Active Internal Sampling Pump
- Differential Pressure
- Operating Manual & Quick Reference Guide
- Li-Ion Battery & AC Charger
- Factory Calibration Certificate

Select UP to ANY 3 Gases Below:

Parameter	Sensor	Range	Res.	Accuracy
C2 - Carbon Dioxide (CO ₂)*	NDIR	0 - 5,000 ppm	1 ppm	±2% rdg. ± 10 ppm
C - Carbon Monoxide (CO)*	EC**	0 - 200 ppm	0.1 ppm	± 1 ppm rdg. ± 0.2 ppm
F - Formaldehyde (CH ₂ O)***	EC**	0 - 10 ppm (0 - 10,000 ppb)	1 ppb	2% ± 30 ppb
H - Hydrogen Sulfide (H ₂ S)*	EC**	0 - 100 ppm	1 ppm	± 4% of rdg. ± 0.5 ppm
N - Nitrogen Dioxide (NO ₂)*	EC**	0 - 20 ppm	0.1 ppm	±0.5 ppm of rdg.
O - Oxygen (O ₂)	EC**	0 - 25%	0.1%	± 0.1% vol
S - Sulfur Dioxide (SO ₂)*	EC**	0 - 20 ppm	0.1 ppm	± 0.5 ppm of rdg.
X - Nitric Oxide (NO)*	EC**	0 - 250 ppm	0.1 ppm	± 2 ppm of rdg.

* Other Ranges are Available Upon Request

** Electrochemical

*** Accuracy Based on Laboratory Conditions

Optional Accessories



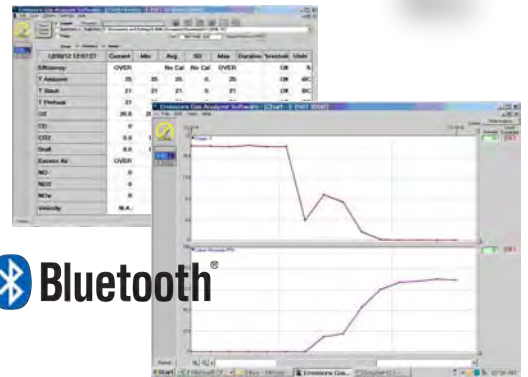
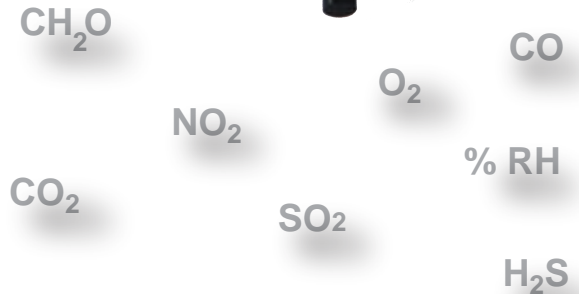
Wireless Bluetooth™
Printer
(EE900P)



Sampling Probe
(E85AACSF13)



Pitot Tube
for Air Velocity
(BB610032)



AQ Gas® Real-time
Datalogging Software

Distributed By:



E Instruments International

www.E-Inst.com

P: 215-750-1212 F: 215-750-1399 A: 402 Middletown Blvd, Ste 216 Langhorne, PA 19047