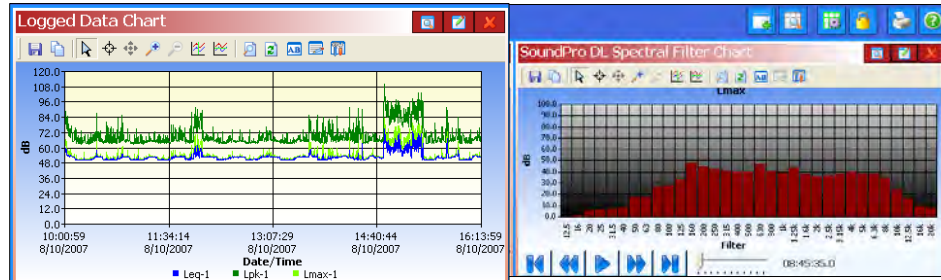


# QuestSuite Professional II (QSP-II)



Quick tour of QSP-II and SoundPro studies

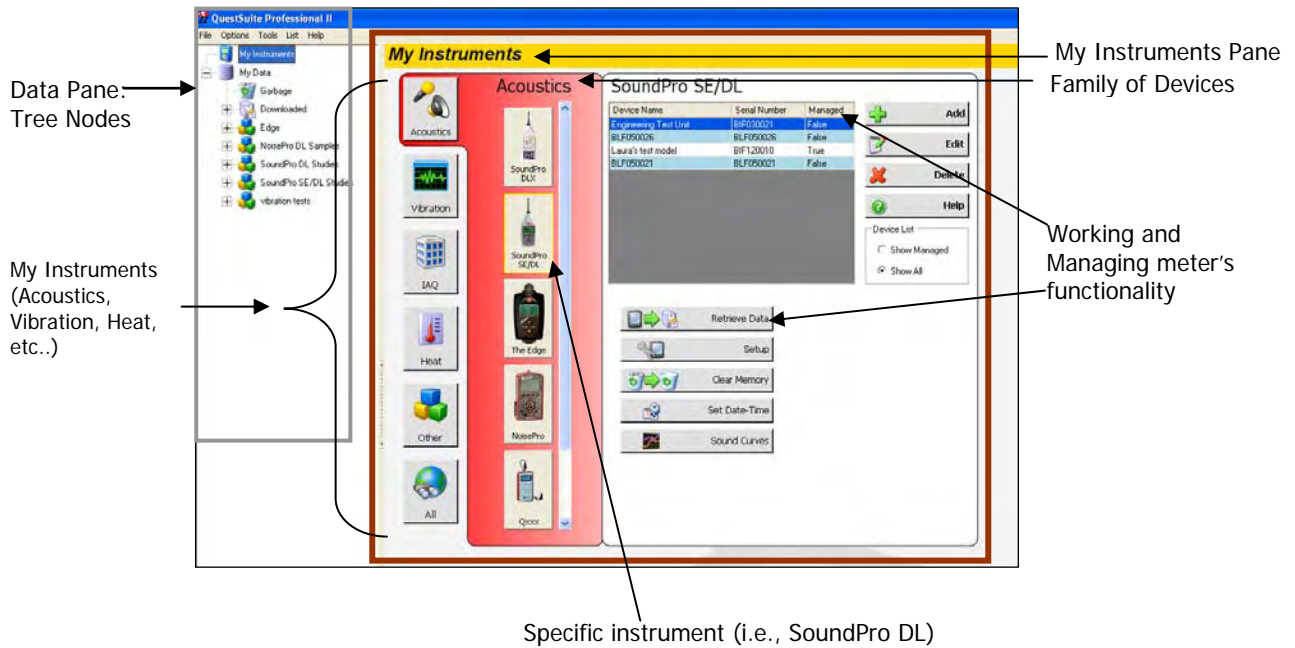
## Contents

Welcome to QuestSuite Professional II .....	2
<b>A brief introduction</b> .....	<b>2</b>
Functionality .....	2
License .....	2
<b>Understanding Start-up screen</b> .....	<b>3</b>
My Instruments .....	3
My Data .....	3
<b>Setting up your meter</b> .....	<b>4</b>
SoundPro set-up parameters .....	<b>4</b>
<b>Retrieving your data</b> .....	<b>7</b>
<b>Downloaded data</b> .....	<b>8</b>
<b>Organizing your folders (nodes)</b> .....	<b>9</b>
Creating and moving a new folder structure (node) .....	10
Renaming Nodes, Sessions, and/or Studies .....	10
<b>Viewing your studies in panels (charts and tables)</b> .....	<b>11</b>
<b>Adding panels (charts/graphs)</b> .....	<b>12</b>
<b>Saving your customized layout (charts/graphs)</b> .....	<b>12</b>
<b>Creating reports</b> .....	<b>13</b>
<b>Sharing reports</b> .....	<b>14</b>
Backing up your noise data/Exporting a Node .....	<b>14</b>

## Figures

Figure 1-A: QSP-II is designed with a bi-pane view .....	2
Figure 1-B: Explaining start-up screen .....	3
Figure 1-C: SoundPro Set-up screen .....	4
Figure 1-D: Setting up Measurement .....	5
Figure 1-E: Setting up Auto-On .....	6
Figure 1-F: Setting up Logging .....	5
Figure 1-G: Setting up Security .....	6
Figure 1-H: Setting up Triggering .....	6
Figure 1-I: Setting up Options .....	8
Figure 1-J: Retrieving your data .....	7
Figure 1-K: Downloaded node/folder structure .....	8
Figure 1-L: Unorganized Files/Studies Example .....	9
Figure 1-M: Example of organizing your studies .....	9
Figure 1-N: Add Organizer Node .....	10
Figure 1-O: Add a Node Name .....	10
Figure 1-P: Rename Session .....	10
Figure 1-Q: Example of Graphs and Charts .....	11
Figure 1-R: Adding panels .....	12
Figure 1-S: Saving a customized layout (charts/graphs) .....	12
Figure 1-T: Sample SoundPro Report in QSP-II .....	13
Figure 1-U: Saving reports as .pdf file .....	14
Figure 1-V: Exporting data for back-up or sharing of data .....	14
Figure 1-W: Importing data once it is exported .....	14

# Welcome to QuestSuite Professional II



**Figure 1-A: QSP-II is designed with a bi-pane view**

## A brief introduction

QuestSuite Professional II (QSP-II) is a software application from Quest Technologies that runs under the Windows operating system which includes the following instruments: Acoustic meters (i.e., SoundPro, SoundPro DLX, NoisePro, Q300, Q400, Q500), Vibration meters (i.e., HAVPro, VI-400Pro), and Heat Stress (i.e., QT34/QT36).

## Functionality

You can use QSP-II for a variety of functions including the ability to display and manipulate data after it is uploaded to the computer. Additionally, QSP-II is used to download information to the instrument, including configuration files, as well as updating the instrument's parameter settings, clock, and storing instrument certification history.

## License

QSP-II is available with a single user-license, a 10-use license and an unlimited license. Please contact Quest at [www.questtechnologies.com](http://www.questtechnologies.com) or your Quest dealer for ordering information.

# Understanding Start-up screen

The user interface in QuestSuite Professional II uses the tree view and file menu concept used by most file browsers.

The main window is divided into (2) sections (or window “panes”): “My Instruments” and “My Data”.

## My Instruments

My Instruments enables you to manage multiple instruments in one program which encompasses the following functions:

- Selecting and saving setup parameters to use for future testing
- Store instrument certification information
- Set Date and Time on the instrument
- Retrieve data (or “download” data) from the meter into QSP-II

## My Data

In the “My Data” pane (also referred to as “control pane”), you will find your saved sessions. This tree view section is also used to manage your studies by naming them, grouping them, and exporting/importing the studies. When QuestSuite Professional II is opened, **“My Data”** pane will always be to the far left.

**My Data**  
A section of the screen (called “pane”) used to view your saved sessions.

**My Instruments**  
Select a meter and then use it to retrieve data, setup parameters, and set date and time.

**Meter Functionality**  
Retrieve Data, Setup, Clear Memory, and set Date-Time, etc.

Device Name	Serial Number	Managed
Engineering Test Unit	BLF03002	False
BLF056026	BLF090026	False
Lukas's test model	BIF120010	True
BLF056027	BLF056027	False

Select instrument (i.e., SoundPro)

**Figure 1-B: Explaining “My Instruments”**

# Setting up your meter

As you are setting up your instrument, QuestSuite Professional II is designed in easy to use set-up screens with an index tab structure. All meters can be customized with industry standard set-up parameters which can then be saved in case you wish to create a couple or several customized setups (i.e., xxx city ordinance 1, xxx city ordinance 2, etc..) Once the setups are saved, you can then send (or retrieve) these settings from (or to) your pc to (or from) the instrument.


## SoundPro set-up parameters

The following example outlines how to manipulate and customize your set-up parameters with the SoundPro.

### ➤ Customizing set-up parameters and saving the configuration

1. Attach the SoundPro to your pc using the USB cable.



2. In QSP-II, select the SoundPro from the acoustic family of "My Instruments".
3. Select the **Setup**  **Setup** button (See Figure 1-B) and the following screen will appear.

#### Saved settings to Computer

- a. To save and apply a new config. first select your settings and then select "Save As" and name the config.
- b. Next, highlight config. and select the blue arrow. (This will send config. to SoundPro partition.)

#### Saved settings to SoundPro

- c. To Apply the newly saved config. (see "Saved settings to Computer"), click the Apply button. (This will send the config. to the SoundPro.)

#### Tabs

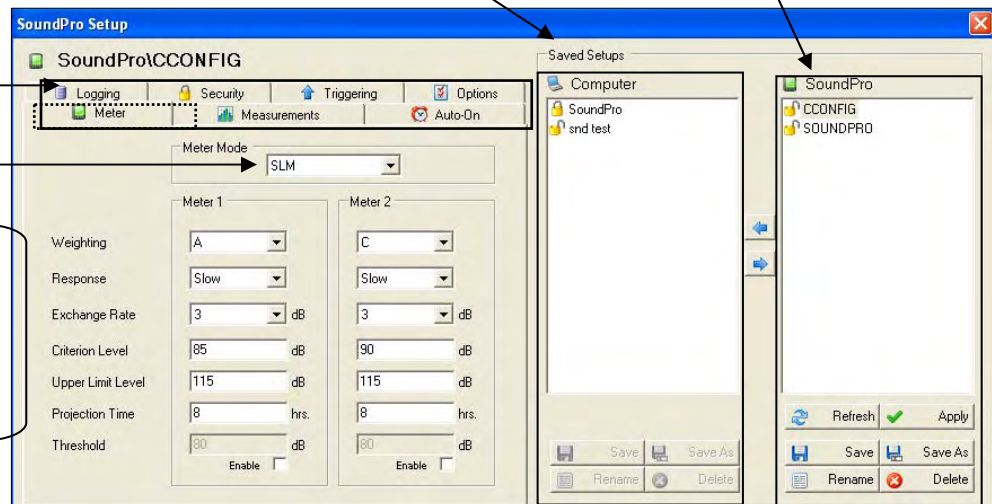
- Used to setup parameters
- **Meter screen**

#### Meter Mode:

- SLM, 1/1, 1/3, STI-PA

#### Meter 1/ 2 settings

- Weighting, Response, ER, CL, UL, PT, Threshold

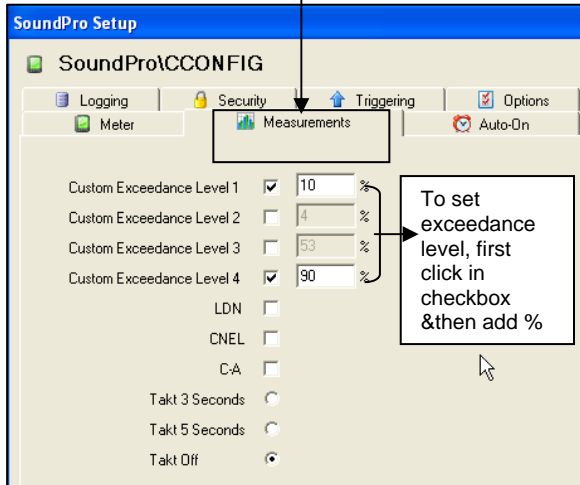


**Figure 1-C: SoundPro Set-up screen**

4. You have the following options:

**a. Measurements screen**

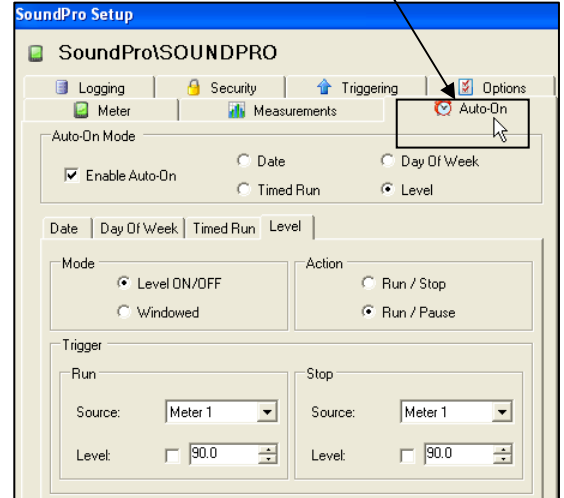
Select exceedance levels and additional summary values (if applicable).



**Figure 1-D: Setting up Measurements**

**b. Auto-On screen**

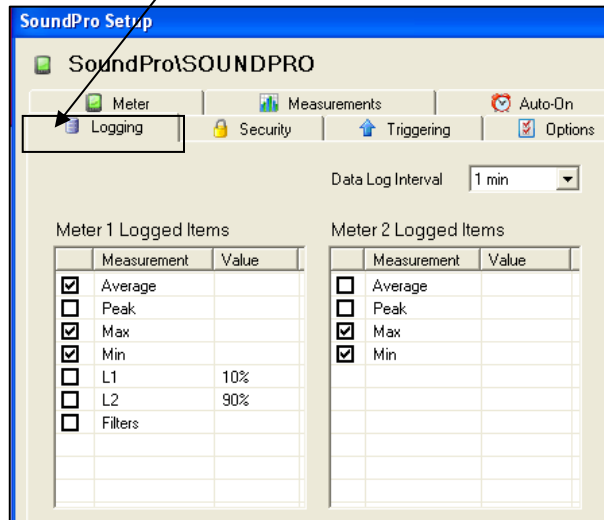
To enable Auto-on, click in the “Enable Auto-On” checkbox. Select the appropriate Date, Day of Week, Timed Run, and/or Level settings.



**Figure 1-E: Setting up Auto-On**

**c. Logging screen**

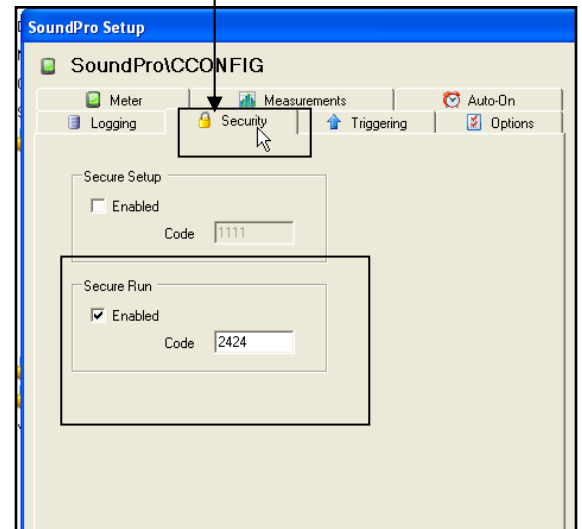
Click on specific measurements to Log during your study. For L1 and L2, if selected also select a % for exceedance level.



**Figure 1-F: Setting up Logging**

**d. Security screen**

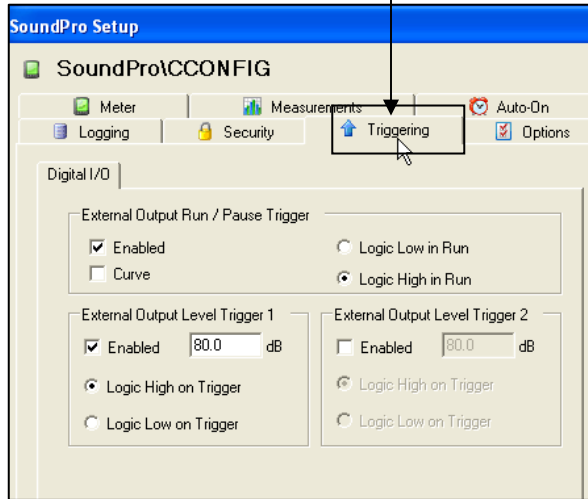
To enable, click in “Secure Setup” or “Secure Run” checkboxes. To set a code, type in a 4-digit numeric number.



**Figure 1-G: Setting up Security**

### e. Triggering screen

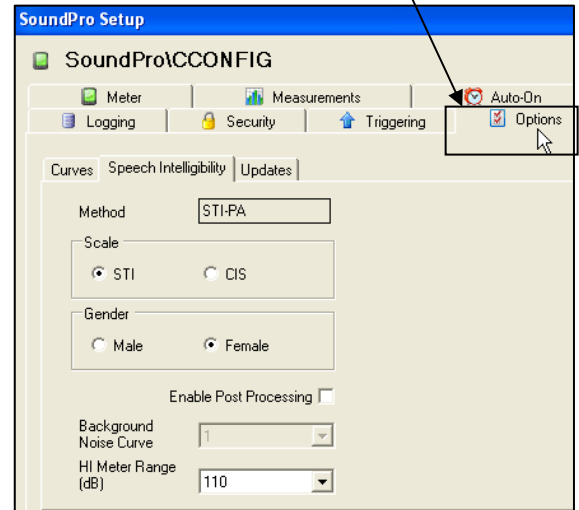
Click on Triggering tab to enable logging for specific external output signals or for comparison of curve results based on high or low noise.



**Figure 1-H: Setting up Triggering**

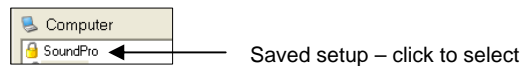
### f. Options screen

If you purchased Curves and/or Speech Intelligibility options, click on the Options tab to enable Sound Curves, Criterion Curves, and Speech Intelligibility.



**Figure 1-I: Setting up Options**

5. To save your customized settings (to use in the future), click the **Save As** button in the “Saved Setups Computer” section and provide a name (i.e., Sound-OSHA) (refer to Figure 1-C).
  - a. To Send the setting to the SoundPro, ensure the new config. is selected and click on the **blue arrow**. (It will save to the “SoundPro” section of saved setups). Click **Apply**.
6. Or, To save the customized setup (and not rename the config.), click on one of the Saved Setup’s listed under “Computer” and select **Save**. (This will overwrite the existing config.)




- a. To Send the setting to the SoundPro, ensure the new config. is selected and click on the **blue arrow**. (It will save to the “SoundPro” section of saved setups). Click **Apply**.

# Retrieving your data

Whether you're working with a meter from the family of acoustics, vibration, and/or heat stress, the "Retrieve Data" function performs a similar process of pulling (or "retrieving") your logged data from the meter to the software. (**NOTE:** please reference your user manual for specific communication details.)

- ☑ **Example of retrieving data from the SoundPro meter.**
- (1) Ensure your **SoundPro** is **powered on** and connected with a **USB cable** from the SoundPro (SP) external output to your pc (see "1" below).
  - (2) From "My Instruments" of QSP-II, select **Acoustics**, select **SoundPro**, and click on **Retrieve Data** button (see "2" below).
  - (3) In the **Retrieve Data** screen, either click on **Select All** or click individual sessions by clicking in specific checkboxes.
  - (4) Click on the **Download** button. When completed, it will state "Complete!".
  - (5) Close the Retrieve Data screen by clicking on the red "x". You are now ready to view your studies via the Downloaded Node. (See next section, "Downloaded Node".)

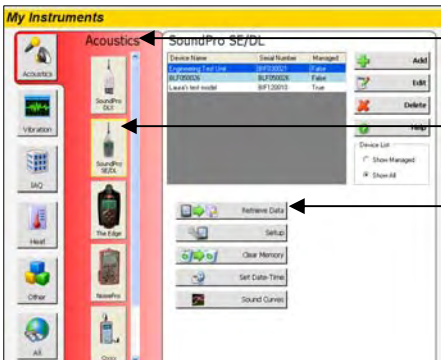
**1**



**SoundPro**

- Turn On
- Plug in USB cable from SP to pc

**2**

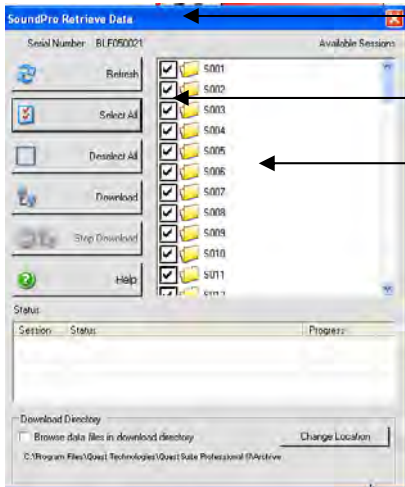


Acoustics

SoundPro

Retrieve Data

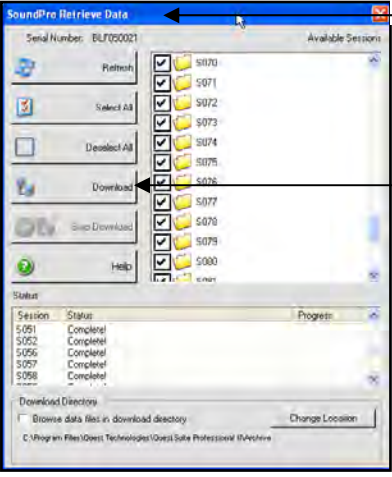
**3**



Retrieve Data screen

- **Select All**
- \* or \*
- Click in specific checkbox sessions

**4**



Retrieve Data screen

Download

**Figure 1-J: Retrieving your data**

# Downloaded data

- ✓ Where your studies are stored

## Downloaded node

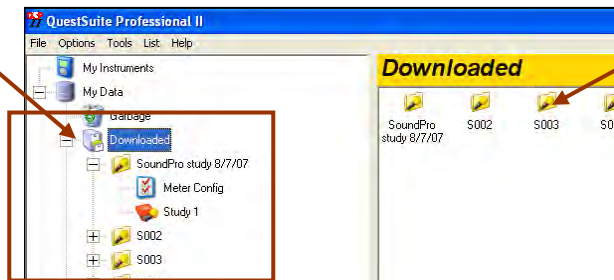
When you sync the meter to the software and upload the files into QSP-II, these sessions are automatically stored in the "Downloaded" node (or folder) and a generic name is assigned to the sessions(s).

For example, you may be tracking noise in a machine shop and your main objective is to determine the noise in three different work areas of the plant (such as: two different machinist areas and a welding area). You set the SoundPro to run and pause three times at one-hour intervals. When the tests are completed, you upload the data into QSP-II. The tests will store as one session under "Downloaded" node and each one-hour test is denoted as a "Study".

**Analogy:** The concept of storing files is similar to how your inbox works in Microsoft Outlook. In Outlook, the files are automatically sent to a general inbox and it is up to you to organize your mail into subfolders. Likewise, with QSP-II, once the files are collected, they are stored in a general inbox called "Downloaded". With a simple right-click, you can quickly rename the file and create a user-friendly filing system to manage your studies. The next step for organizing your files would be to drag and drop the sessions into a newly created node or organizer node.

### Downloaded node/folder

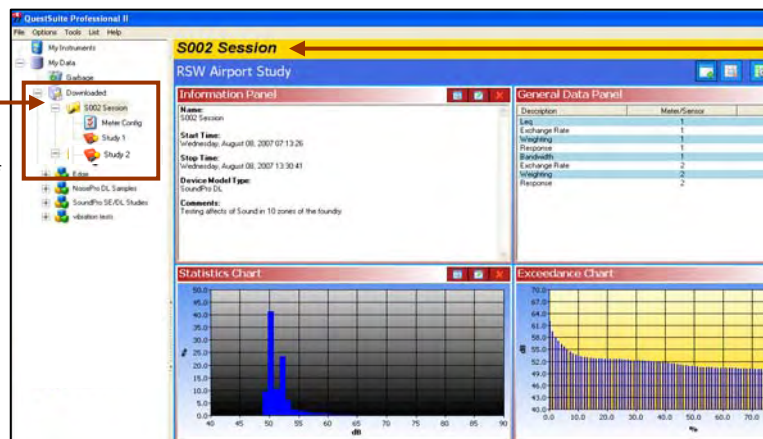
- Click on Downloaded and then click the "+" to expand the tree view.
- It will reveal the Session, Meter configuration (same as your set-up parameters), and Study data



Downloaded files appear in the bi-pane view when you select Downloaded. In this view, you can manage your files by renaming, moving, and or selecting multiple files at one time.

### Session

- Click on a session and expand ("+") to study level.
- During your Sound test, if you Pressed Run, Pause, Run, Stop. A session file will appear with two studies underneath. The Information panel will indicate date and time.



Session details appear when session is selected in bi-pane view. Charts and graphs are customizable using the toolbars in QSP-II

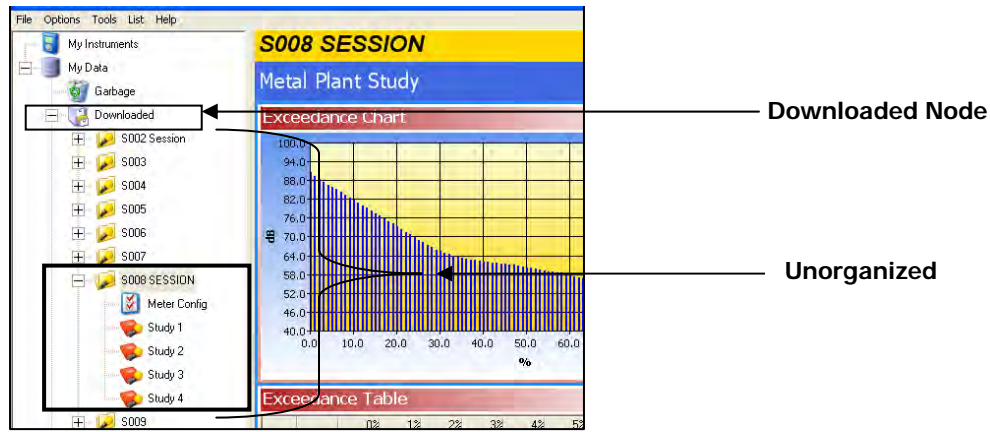
Figure 1-K: Downloaded node/folder structure

# Organizing your folders (nodes)

As explained previously, imported instrument data is automatically stored in a folder system called "Downloaded" (node). Leaving all your data in one huge list under the downloaded node is confusing and can be inefficient since generic names are assigned to sessions and studies. In order to categorize your data, use the "Add Organizer Node" menu option and assign descriptive names. A quick drag and drop of the data will enable you to organize and manage your nodes.

## Un-organized Session


**Example 1:** Displays a generic name assignment for a SoundPro session that is currently stored under "Downloaded" node as "S008 Session" which contains 4 studies ("Study 1", "Study 2", "Study 3", "Study 4")

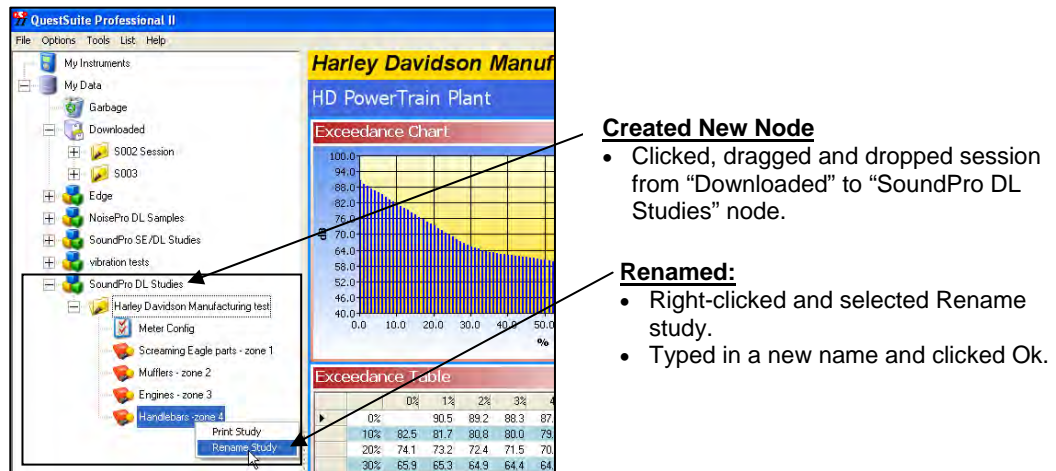


**Figure 1-L: Unorganized Sessions Example**

## Organized into a node with renamed studies

**Example 2:** Displays an organized node. This was accomplished by:


1. A new node title was assigned by right-clicking on My Data and choosing Add Organizer Node.
2. Next, the session was moved by clicking, dragging and dropping the Session icon  directly over the newly named node icon.
3. Lastly, the session and studies were renamed by right-clicking on the session and study and typing in a new name.




**Figure 1-M: Example of organizing your studies**

## Creating and moving a new folder structure (node)

The following steps outline how to create a node and how to move a node around in the tree view structure.

1. Right-click on “**My data**” . (This will create a node directly under the root of “My Data”.)

 **NOTE:** If you want it placed under an existing node (similar to a sub-folder node), click on an existing node.

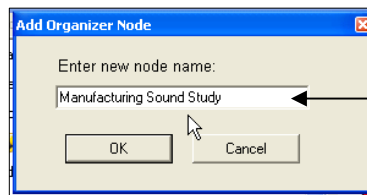
2. Select **Add Organizer Node** from right-clicking My Data menu. An **Add Organizer Node** dialog appears.



Right click “My Data” and select “Add Organizer Node”

**Figure 1-N: Add Organizer Node**




3. Type a name for the node.



Type in a name and click Ok

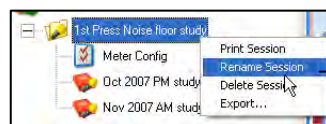
**Figure 1-O: Add a Node Name**

4. Click **OK**. The new node will dock underneath the existing nodes if you selected “My Data”.
5. To move the node, **click, drag, and drop** it directly on My Data or another node.

 **NOTE:** If it is **disallowed**, the following icon will appear . When you drop it directly on another node, the node icon  will appear indicating an “allowable” place.

## Renaming Nodes, Sessions, and/or Studies

1. Right-click on the node, session, or study you wish to rename and select **Rename**.



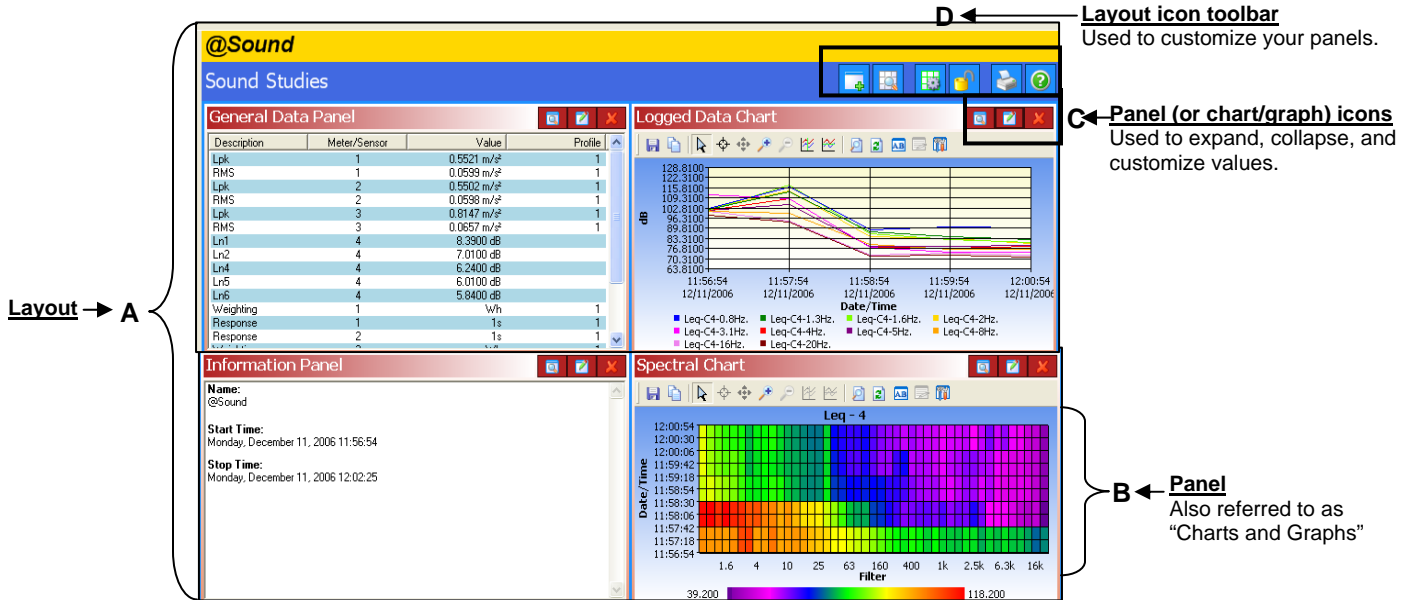
Rename Session

**Figure 1-P: Rename Session**




2. Type in a specific name and click **Ok**. The new name will appear.

# Viewing your studies in panels (charts and tables)


You can add, edit, print, and export data in QSP-II. The following diagram illustrates the main features and menu bars in QSP-II.

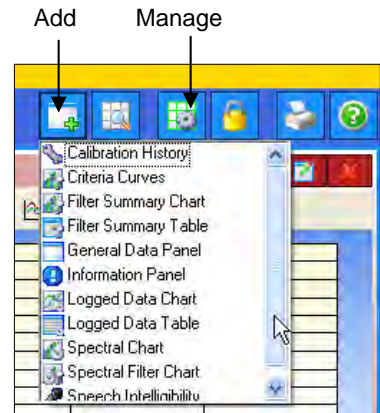


**Figure 1-Q: Example of Graphs and Charts**

Graphs & Charts layout view	Explanation
A. Layout	QSP-II is divided into two panes (or sections). One is the layout view and the second pane is the "control pane". The layout is divided into panels which contain charts, graphs, calculator, etc. You can add charts and/or graphs, move them in the appropriate position, and/or customize the data values.
B. Panel	The default template has four panels which can be moved, edited, and expanded or collapsed. (See "chart and graph icons").
C. Chart & Graph icons	Used to enlarge or hide the chart or graph (also called panel), edit the data, or close the view. <ul style="list-style-type: none"> <li> <input checked="" type="checkbox"/> Expand or Collapse the panel (graph/chart)</li> <li> <input checked="" type="checkbox"/> Edit (edit the parameters of the selected screen).</li> <li> <input checked="" type="checkbox"/> Delete (closes the window)</li> </ul>
D. Layout icon toolbar	This toolbar is used to add tables and/or charts, arrange tables or charts, manage the layout view, lock it, print reports and access to the help files.

## Adding panels (charts/graphs)

1. Ensure you selected the appropriate study and are viewing panels (graphs/charts) on the right-hand side of your screen. (See Figure 1-K, page 8 for details.)
2. Click on the **Add** icon  .
3. Select a chart or graph. An edit screen may appear. Select the appropriate settings and click **Ok**. It will display on your screen.





**Figure 1-R: Adding panels**

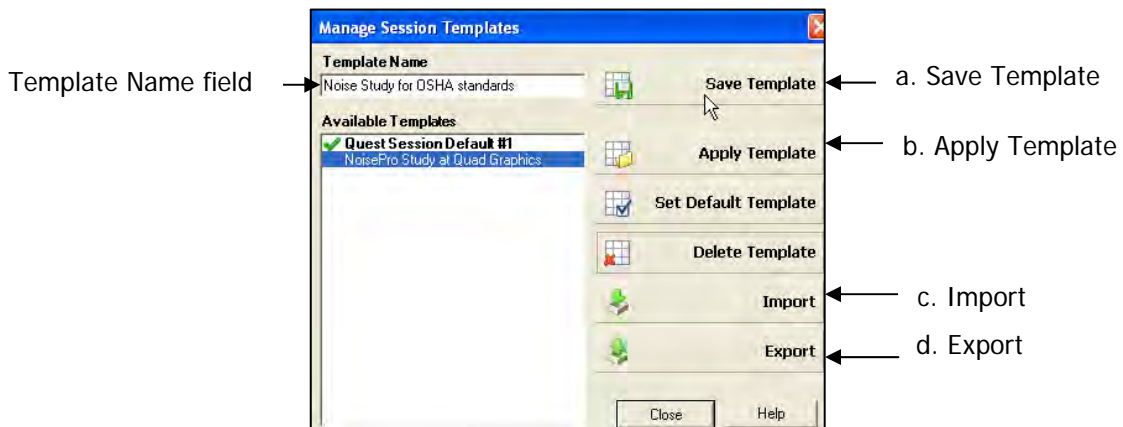
## Saving your customized layout (charts/graphs)

You may have spent some time organizing your study data by adding new charts and/or graphs, rearranging the panes (left-click on a graph/chart heading and drag and drop to a specific spot), and/or editing the logged data values. With the save template button, you can save your customized layout so every time you open a study the appropriate charts and graphs are displayed.

### ➤ How to save and apply a layout

1. Ensure you selected the appropriate study and are viewing panels (graphs/charts) on the right-hand side of your screen. (See Figure 1-K, page 8, for details.)
2. Click on the **Manage Templates** icon  (see layout icon toolbar in Figure 1-R.)
  - a. The Manage Session Templates screen will appear.
3. To create a new template, type a name in the **Template Name** field.
4. Click the Save **Template** button.
5. Select the appropriate template name in the “available templates field” and Click the **Apply Template** button.


 **NOTE:** If you want to share the template with other users (i.e., create a corporate template and share the template with your co-workers), use the export/import buttons.







**Figure 1-S: Saving a customized layout (charts/graphs)**




# Creating Reports

OSP-II reports are saved in Adobe® PDF format for easy viewing and printing.

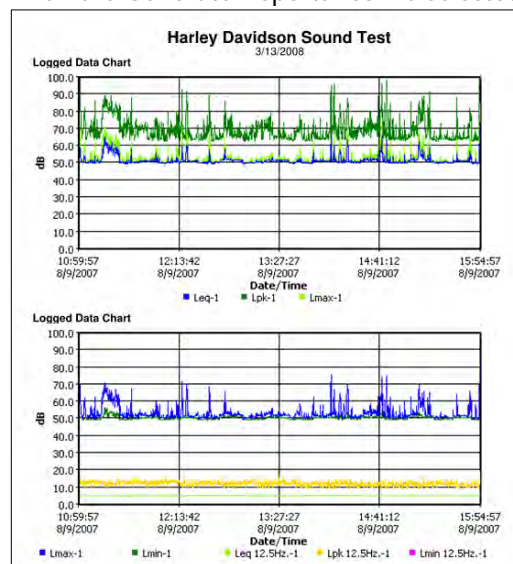
 **NOTE:** The report will print in the order that the panels (charts/graphs) appear on your computer screen. To rearrange, click on the title of a chart or table, drag, and drop a chart/table on the title bar of a panel.

-  : If your cursor displays this icon, , it indicates the panel cannot be dropped into the current position of your cursor.
-  : If your cursor displays this icon, , it indicates the panel can be inserted into the current position of your cursor.

## ➤ Generating a Session or Study Report

1. **Left-click** on desired Session (it will expand the session and the views will appear in window).
2. **Right-click** a Session  or Study Node  and select **Print Session** from the menu.
  - The report will dock under the study node or session node depending on if you chose study or session.
  - To remove, **right-click** the report and click **Delete Report**.
  - To save the report in an alternative folder/directory (i.e., on your desktop and then you can email it and share the information.), select **Save As** and add it to a directory or folder on your pc (or network).
3. Alternatively, select the **Printer Icon**  when the Session or Study data is displayed in the chart and tables panels.

✓ When the Generate Reports Icon is selected, the following screen will appear.

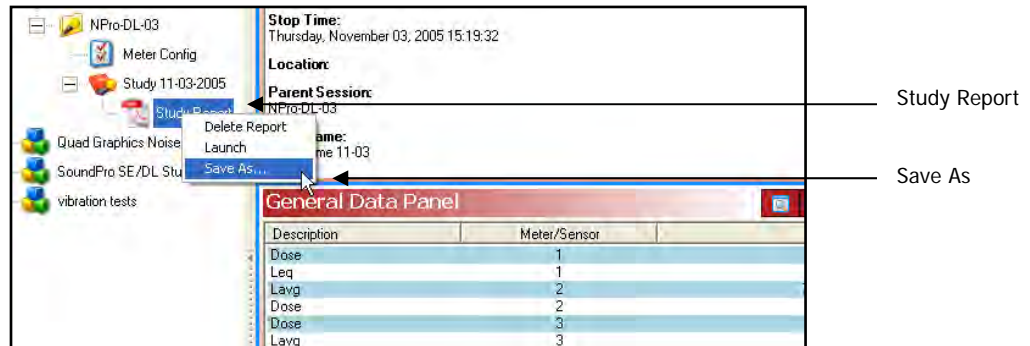


**Figure 1-T: Sample SoundPro Report in QSP-II**

## Sharing reports

Once reports are created, you have the option of saving the data as an Acrobat Adobe file in case you want to back up the data and/or share the information with others via email. The following steps outline this process.

1. **Right-click** on the study report and select **Save As**.
2. Type in a file name, select the appropriate folder/file directory, and click **Save**.
  - a. If emailing, you will want to locate the file and attach it in a new memo.



**Figure 1-U: Saving reports as .pdf file**

## Backing up your noise data/Exporting a Node

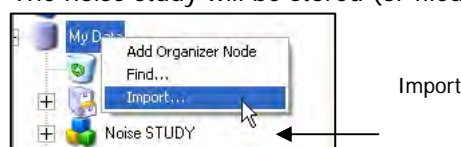
QSP-II enables you to back-up your noise data; and at the same time, you can share this information with someone who also has QSP-II software through your network or email system.

1. **Right-click** on the node you wish to share (left-hand side of screen.)
2. Click **Export**. Type in a name and place it in an appropriate folder.
  - If you want to email the noise data, attach this as a file. The person receiving the file would then follow step 3 below.
  - This creates as a "node" file and will save it as a .node file.



**Figure 1-V: Exporting data for back-up or sharing of data**

3. To view this data, right-click on "My Data" and select **Import**. Select the file from the location you saved it to. (If it is in an email, first save the node file in one of your folders and then follow this step).
  - The noise study will be stored (or filed) under "Downloaded" node.



**Figure 1-W: Importing data once it is exported**