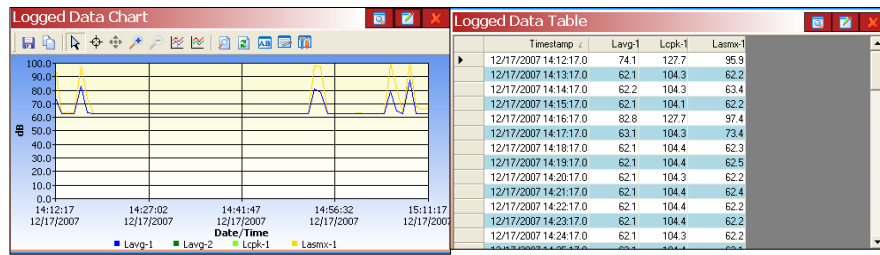


QuestSuite Professional II (QSP-II)



Quick tour of QSP-II and the Edge Studies

Contents

Welcome to QuestSuite Professional II	2
A brief introduction	2
Functionality	2
License	2
Understanding Start-up screen	3
My Instruments	3
My Data	3
Setting up your meter	4
SoundPro set-up parameters	4
Retrieving your data	8
Downloaded data	9
Organizing your folders (nodes)	10
Creating and moving a new folder structure (node)	11
Renaming Nodes, Sessions, and/or Studies	11
Viewing your studies in panels (charts and tables)	12
Adding panels (charts/graphs)	13
Saving your customized layout (charts/graphs)	13
Creating reports	14
Sharing reports	15
Backing up your noise data/Exporting a Node	15

Figures

Figure 1-A: QSP-II is designed with a bi-pane view	2
Figure 1-B: Explaining start-up screen	3
Figure 1-C: Edge Set-up (dosimeter) screen	4
Figure 1-D: Setting up the Edge Display	5
Figure 1-E: Setting up Auto On feature	5
Figure 1-F: Setting Secure Run Mode	5
Figure 1-G: Setting a name to the Edge	6
Figure 1-H: Clearing the Edge	6
Figure 1-I: Setting Time and Date	6
Figure 1-J: QSP-II firmware updates	7
Figure 1-K: Retrieving your data	8
Figure 1-L: Downloaded node/folder structure	9
Figure 1-M: Unorganized Files/Studies Example	10
Figure 1-N: Example of organizing your studies	10
Figure 1-O: Add Organizer Node	11
Figure 1-P: Add a Node Name	11
Figure 1-Q: Rename Session	11
Figure 1-R: Example of Graphs and Charts	12
Figure 1-S: Adding panels	13
Figure 1-T: Saving a customized layout (charts/graphs)	13
Figure 1-U: Sample SoundPro Report in QSP-II	14
Figure 1-V: Saving reports as .pdf file	15
Figure 1-W: Exporting data for back-up or sharing of data	15
Figure 1-X: Importing data once it is exported	15

Welcome to QuestSuite Professional II

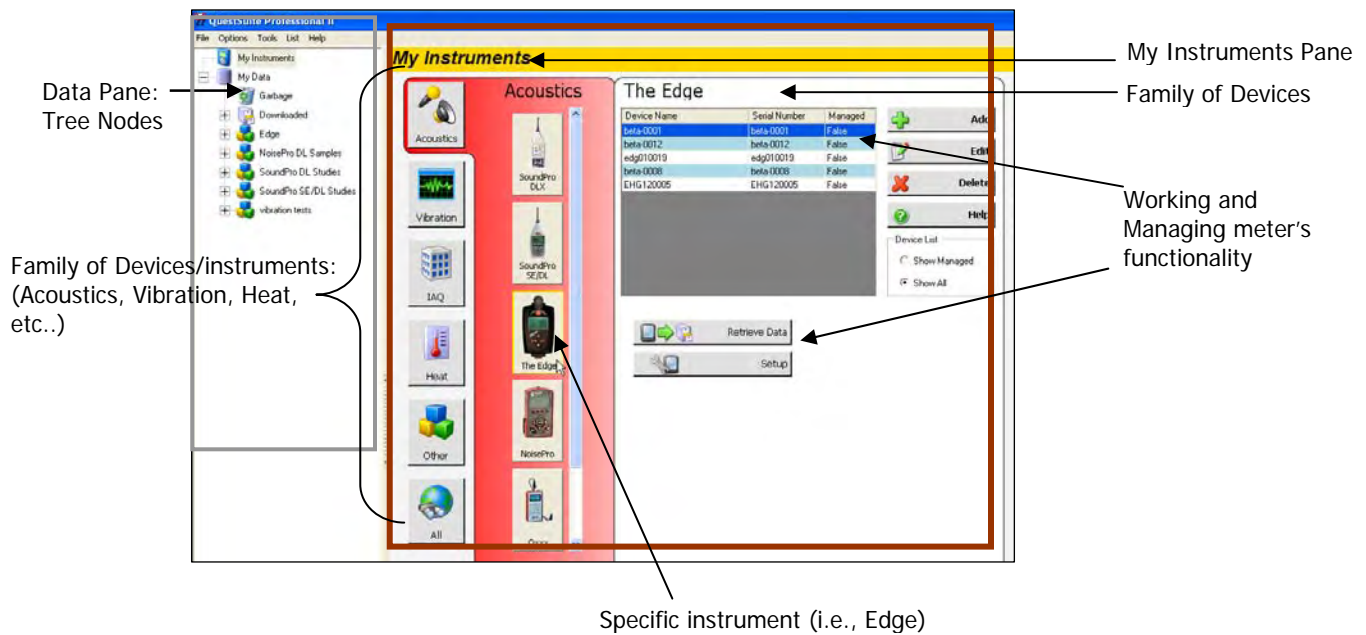


Figure 1-A: QSP-II is designed with a bi-pane view

A brief introduction

QuestSuite Professional II (QSP-II) is a software application from Quest Technologies that runs under the Windows operating system which includes the following instruments: Acoustic meters (i.e., SoundPro, NoisePro, Q300, Q400, Q500), Vibration meters (i.e., HAVPro, VI-400Pro), and Heat Stress (i.e., QT34/QT36).

Functionality

You can use QSP-II for a variety of functions including the ability to display and manipulate data after it is uploaded to the computer. Additionally, QSP-II is used to download information to the instrument, including configuration files, as well as updating the instrument's parameter settings, clock, and storing calibration and serial number information.

License

QSP-II is available with a single user-license, a 10-use license and an unlimited license. Please contact Quest at www.questtechnologies.com or your Quest dealer for ordering information.

Understanding Start-up screen

The user interface in QuestSuite Professional II uses the tree view and file menu concept used by most file browsers.

The main window is divided into (2) sections (or window “panes”): “My Instruments” and “My Data”.

My Instruments

My Instruments enables you to manage multiple instruments in one program which encompasses the following functions:

- Selecting your setup parameters and saving these setups as templates in the software.
- Store calibration certification information
- Set Date and Time on the instrument
- Retrieve data (or “download” data) from the meter into QSP-II

My Data

In the “My Data” pane (also referred to as “control pane”), you will find your downloaded studies. This tree view section is also used to manage your studies by naming them, grouping them, and exporting/importing the studies. When QuestSuite Professional II is opened, “My Data” pane will always be to the far left.

The screenshot displays the QuestSuite Professional II interface. On the left is the 'My Data' pane, which is a tree view containing folders like 'My Instruments', 'My Data', 'Downloaded', 'NoisePro D/L Samples', 'Quad Graphics Noise Study', 'SoundPro SE/DL Studies', and 'Vibration tests'. An arrow points from the text 'My Data' to this pane. The main area is the 'My Instruments' pane, which is divided into 'Acoustics' and 'NoisePro' sections. The 'Acoustics' section shows icons for 'SoundPro SLX', 'SoundPro SE/DL', 'In Edge', and 'NoisePro'. An arrow points from the text 'Select instrument (i.e., Edge)' to the 'In Edge' icon. The 'NoisePro' section contains a table of device information and several control buttons.

Device Name	Serial Number	Managed	
NPro-DL-1 User #1	NLD000010	False	+
NPro-DL User #1	NLD100000	False	+
NPro-DL User #1	NLD100049	False	+
NLD010052	NLD010052	False	+
NPC100051	NPC100051	False	+
NPF080114	NPF080114	False	+
NPG030004	NPG030004	False	+
NLD090012	NLD090012	False	+
NLD030015	NLD030015	False	+

Buttons in the NoisePro section include: Retrieve Data, Setup, Clear Memory, Set Date-Time, Device List (Show Managed, Show All), Add, Edit, Delete, and Help.

Annotations:

- My Data**: A section of the screen (called “pane”) used to view your saved studies
- My Instruments**: Select a meter and then use it to retrieve data, setup parameters, and set date and time.
- Meter Functionality**: Retrieve Data, Setup, Clear Memory, and set Date-Time, etc.
- Select instrument (i.e., Edge)

Figure 1-B: Explaining “My Instruments”

Setting up your meter

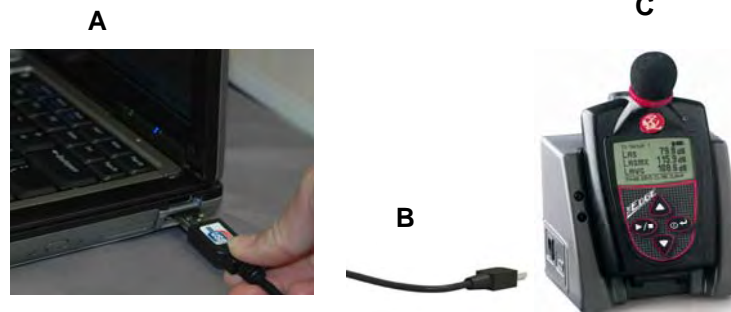
As you are setting up your instrument, QuestSuite Professional II is designed in easy to use set-up screens with an index tab structure. All meters can be customized with industry standard set-up parameters which can then be saved in case you wish to create a couple or several customized setups (i.e., xxx city ordinance 1, xxx city ordinance 2, etc..) Once the setups are saved, you can then send (or retrieve) these settings from (to) your pc to (from) the instrument.


Edge set-up parameters

The following example outlines how to manipulate and customize your set-up parameters with the Edge.

➤ Customizing set-up parameters and saving the configuration (or setup)

1. Dock the dosimeter on the EdgeDock1 (or 5) and turn on the dosimeter by pressing the On/Off Enter button.
2. Plug the USB cable into the computer (see "A") and plug the opposite end into the docking station (see "B" and "C").



3. In QSP-II, select the Edge (from the Acoustics' family of "My Instruments"), and select Setup  button.

4. You have the following setup screens to modify:

a. Dosimeter screen

Dosimeter tab
(under Config tab)

Edge Units:

- Select All
Or
- Click on specific dosimeter(s)

Dosimeter settings

- Timed Response (A)
- RMS weighting (B)
- Peak weighting (C)

LED indicator settings

- Alarm enable (D)
- Heartbeat enable (E)

Dosimeter 1 & 2 parameters

- refer to F and G

Send setup to instrument

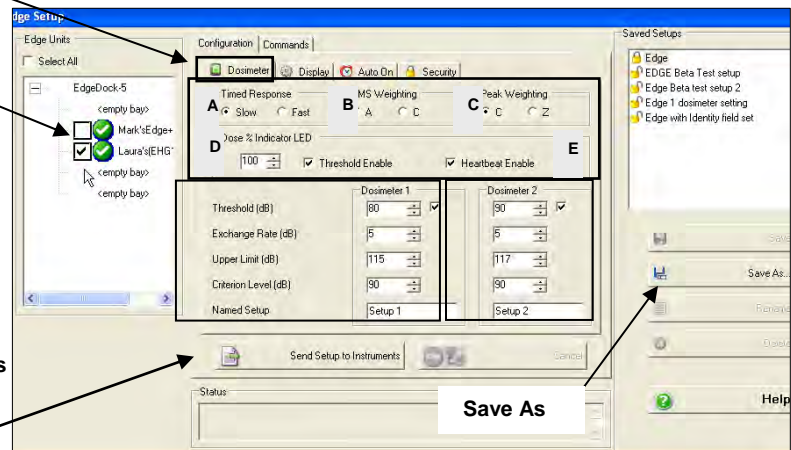


Figure 1-C: Edge Set-up (dosimeter) screen

b. Display screen

In the display screen of QSP-II, you can customize the Edge display. For example, if you only want SPL, Peak, and RT to appear on the dosimeter's display, you would select these in the first three fields and then select "OFF" for all other fields.

Display Tab – click Configuration and then select Display

Edge Units

- Click select All
- Or chose a specific Edge (s)

Item to display

- click on a field you wish to change
- then chose an item from "set selected item"

Set selected item

Figure 1-D: Setting up the Edge Display

c. Auto-On screen

If setting the "Auto on" feature in QSP-II, you can pre-program one study based on each study's length (or duration), start date, and start time. (Note: in the next software release, you will have an option of two Auto On settings called Auto On 1 and Auto On 2.)



Date
Click to enable Auto On mode

Auto On settings
Select appropriate duration, time, and date

Send setup to instrument

Figure 1-E: Setting up Auto On feature

d. Security screen

You can prevent people from inadvertently terminating a study or changing settings with the lock feature enabled. Initially, this feature is set through QSP-II and is then activated after the dosimeter is running. There are three lock or secure run settings: unlocked, locked (allow measurement view , and locked (no measurement view) .

Security

Select All
-Or select specific dosimeter

Setting lock mode

- Click on one of the lock modes.

Figure 1-F: Setting Secure Run Mode

e. Identity screen

With the identity setting on the Edge, you have the option of adding a name to the dosimeter. This is a very useful feature if, for example, you have a handful of dosimeters or a couple hundred dosimeters and you want to track who is assigned to each specific dosimeter.

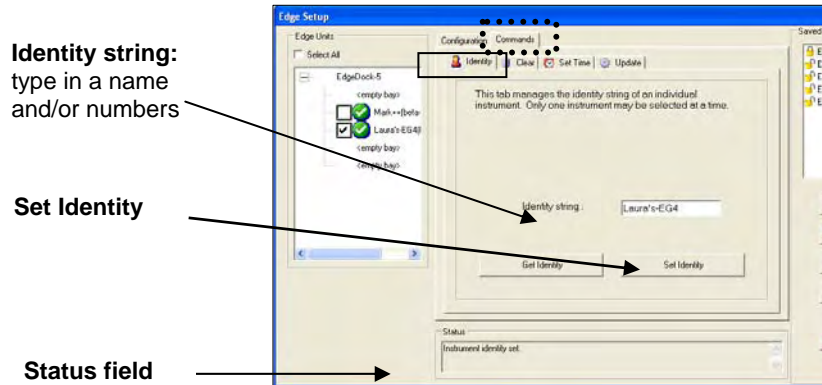


Figure 1-G: Setting a name to the Edge

f. Clear screen

To clear your data, also referred to as resetting your data, ensure your Edge is docked and you are viewing the setup screen in QSP-II.

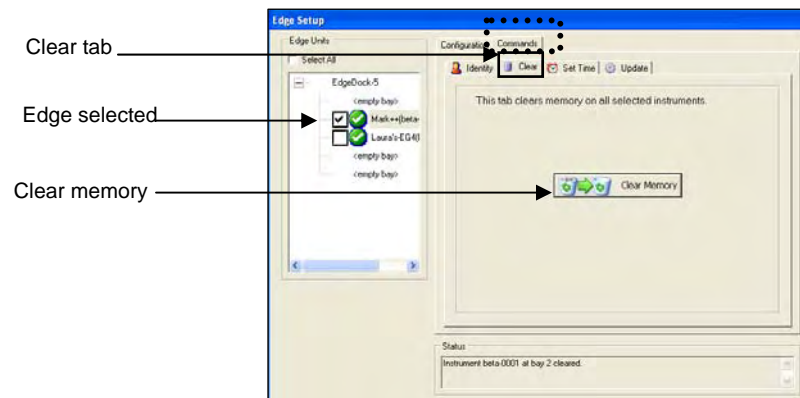


Figure 1-H: Clearing the Edge

g. Set Time Screen

As you begin using the Edge, you will want to set the date and time which is performed via QSP-II setup.

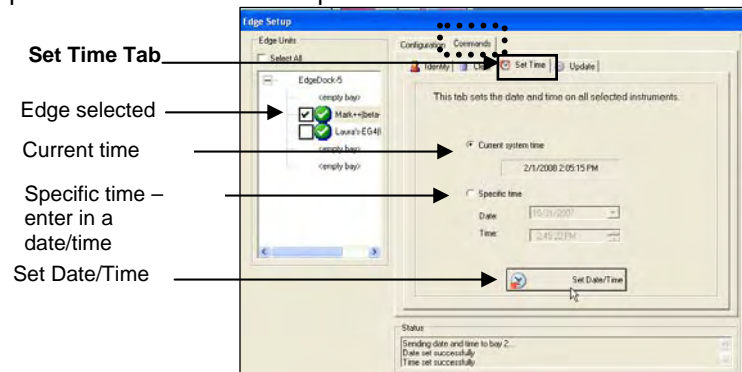


Figure 1-I: Setting Time and Date

h. Update Screen

Latest firmware (i.e., software) releases are available in the Setup screens via the "Update" screen. When updating, only one dosimeter can be updated at a time and must be updated in bay 1 of an EdgeDock5.

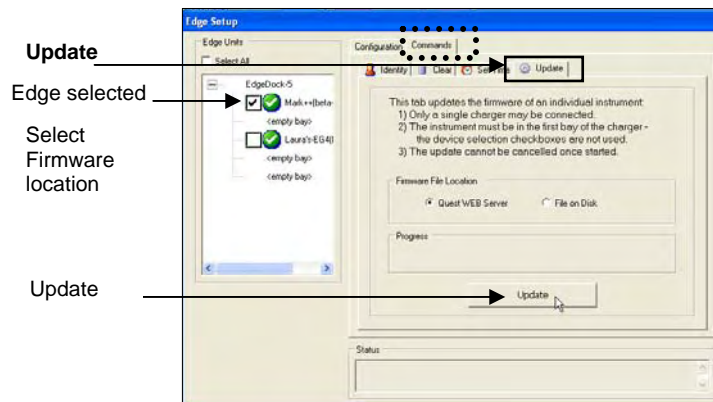
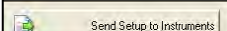
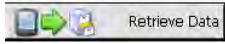


Figure 1-J: QSP-II firmware updates

5. To **save your customized settings** (to use in the future), click the **Save As** button in the "Saved Setups" section and type a name (i.e., OSHA standards) (refer to Figure 1-C).
 - Or to **Save** over an existing settings, click on a name in the Saved Setups section and then click Save.
6. To **Send settings** at any time, make sure the Edge is docked and connected to your pc via the USB cable. On any of the setup screens under the "configuration" tier, click on the "Send setup to instruments"  button.

Retrieving your data

Whether you're working with a meter from the family of acoustics, vibration, and/or heat stress, the "Retrieve Data" function performs a similar process of pulling (or "retrieving") your logged data from the instrument to the software. (**NOTE:** please reference your user manual for specific communication details.)

- ✔ **Example of retrieving data from the SoundPro meter.**

(1) Ensure your **Edge** is **powered on** and connected with a **USB cable** from the docking station to your pc (see "1" below).
- (2) From "My Instruments" in QSP-II, select **Acoustics**, select **Edge**, and click on **Retrieve Data** button (see "2" below).
- (3) In the **Retrieve Data** screen, either click on **Select All** or click in specific dosimeter's checkbox. (see 3 below).
- (4) Click on the **Download** button. (see 3 below). When completed, it will state that the download was successful. (A prompt will appear asking you to clear the data, click Yes or No. **Note:** Quest recommends clearing the data after it is stored in QSP-II or if you wish to delete the data.)

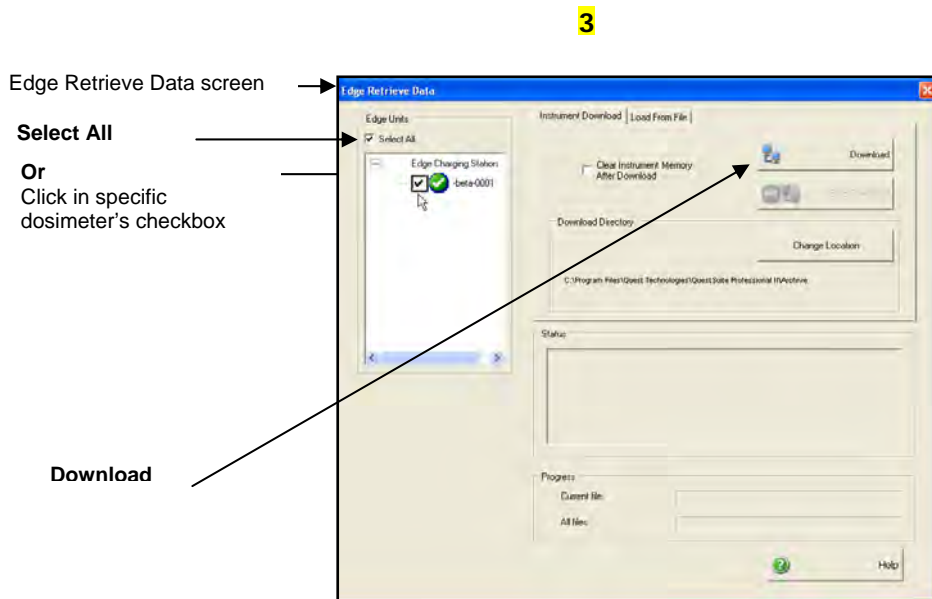
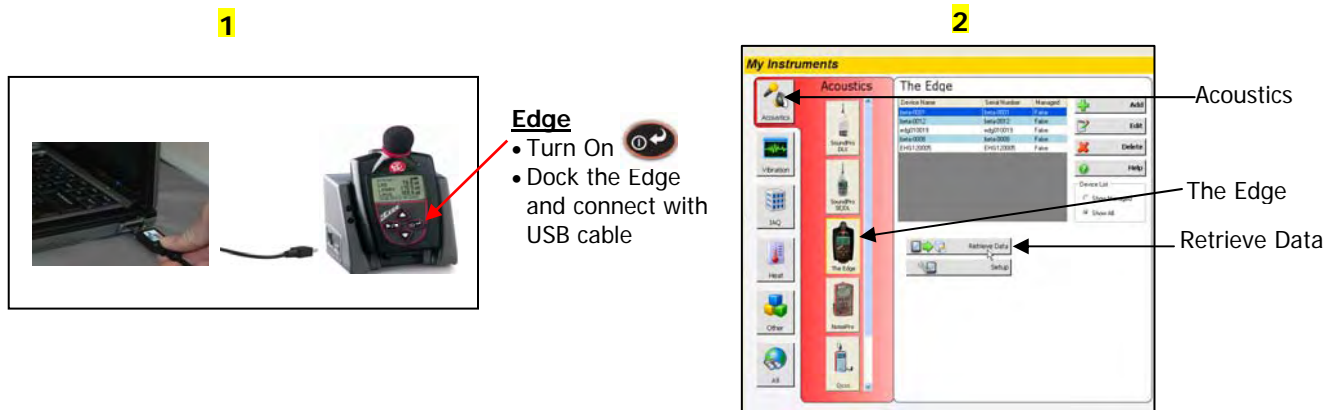


Figure 1-K: Retrieving your data

Downloaded data

- ✓ Where your studies are stored

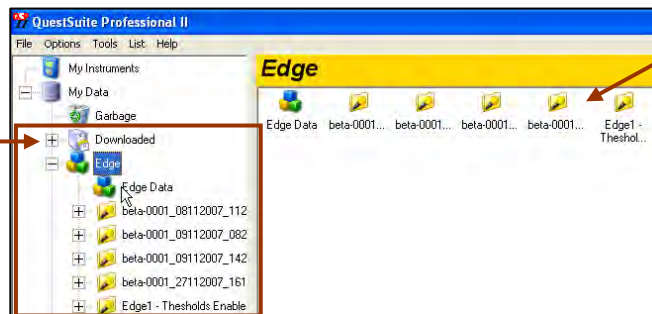
Downloaded node

When you retrieve data from the Edge into QSP-II, these studies are automatically stored in the "downloaded" node and a generic name is assigned to the session. If you pressed run stop a couple of times these will appear as "studies" under the downloaded session. The summation of the studies will store as a session in a hierarchy structure.

Analogy: The concept of storing files is similar to how your inbox works in Microsoft Outlook. In Outlook, the files are automatically sent to a general inbox and it is up to you to organize your mail into subfolders. Likewise, with QSP-II, once the files are collected, they are stored in a general inbox called "Downloaded" node. With a simple right-click, you can quickly rename the file and create a user-friendly filing system to manage your studies. The next step for organizing your files would be to drag and drop the sessions into a newly created organizer.

Downloaded node

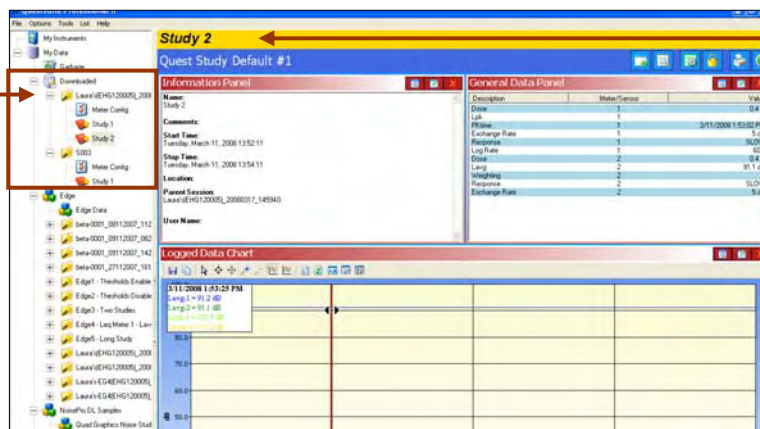
- Click on Downloaded and then click the "+" to expand the tree view.
- It will reveal the Session, Meter configuration (same as your set-up parameters), and Study data



Downloaded files appear in the bi-pane view when you select Downloaded. In this view, you can manage your files by renaming, moving, and or selecting multiple files at one time.

Session

- Click on a session and expand ("+") to view study data.



Session details appear in the layout view as panels in bi-pane view. The panels (or charts and graphs) are customizable using the toolbars in QSP-II

Figure 1-L: Downloaded node/folder structure

Organizing your folders (nodes)

As explained previously, imported instrument data is automatically stored in a folder system called "Downloaded" (node). Leaving all your data in one huge list under the downloaded node is confusing and can be inefficient since generic names are assigned to sessions and studies. In order to categorize your data, use the "Add Organizer Node" menu option and assign descriptive names. A quick drag and drop of the data will enable you to organize and manage your data.

Un-organized Session

Example 1: Displays a generic name assignment for the Edge data that is currently stored under "Downloaded" node as "Laura'(EHG120008)" which contains 3 studies. *Note: The Edge will save the data in a session using the name assigned to the dosimeter (which is set in the "Identity" screen of QSP-II.)*

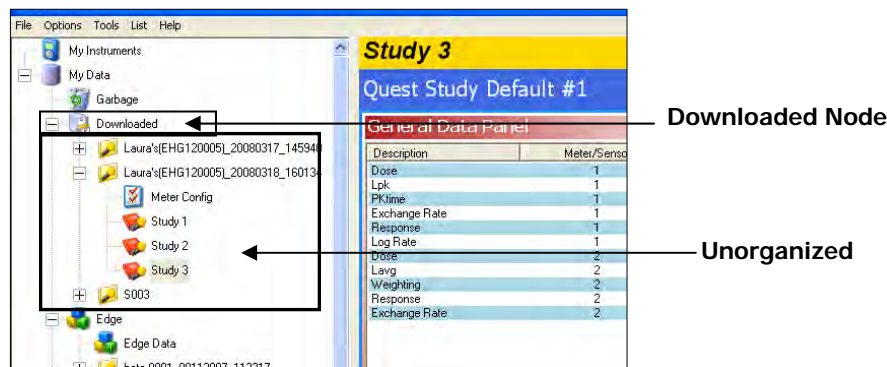



Figure 1-M: Unorganized Session

Organized into a node with renamed studies

Example 2: Displays an organized node. This was accomplished by:

1. A new node title was assigned by right-clicking on My Data and choosing Add Organizer Node.
2. Next, the session was moved by clicking, dragging and dropping the session icon  directly over the newly named node icon (called "Edge").
3. Lastly, the session and studies were renamed by right-clicking on the session and study and typing in a new name.

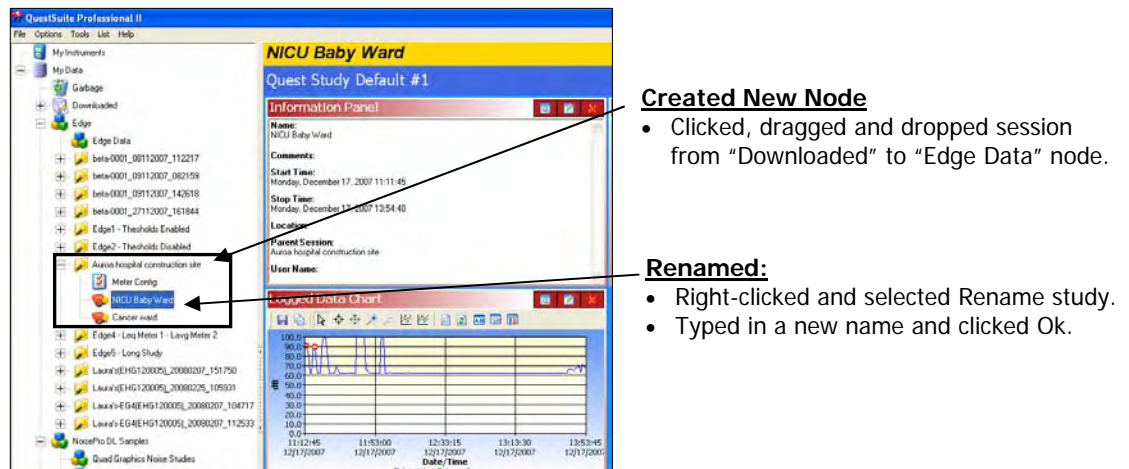




Figure 1-N: Example of organizing your studies

Creating and moving a new folder structure (node)

The following steps outline how to create a node and how to move a node around in the tree view structure.

1. Right-click on “My data” . (This will create a node directly under the root of “My Data”.)

 **NOTE:** If you want it placed under an existing node (similar to a sub-folder node), click on an existing node.

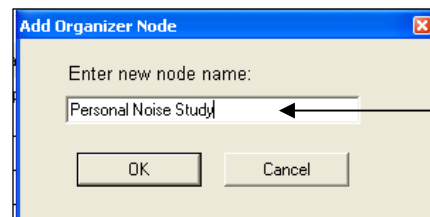
2. Select **Add Organizer Node** from right-clicking My Data menu. An **Add Organizer Node** dialog appears.



Right click “My Data” and select “Add Organizer Node”

Figure 1-O: Add Organizer Node




3. Type a name for the node.



Type in a name and click Ok

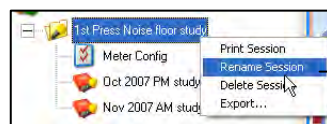
Figure 1-P: Add a Node Name

4. Click **OK**. The new node will dock underneath the existing nodes if you selected “My Data”.
5. To move the node, **click, drag, and drop** it directly on My Data or another node.

 **NOTE:** If it is **disallowed**, the following icon will appear . When you drop it directly on another node, the node icon  will appear indicating an “allowable” place.

Renaming Nodes, Sessions, and/or Studies

1. Right-click on the node, session, or study you wish to rename and select **Rename**.



Rename Session

Figure 1-Q: Rename Session

2. Type in a specific name and click **Ok**. The new name will appear.

Viewing your studies in panels (charts and tables)

You can add, edit, print, and export data in QSP-II. The following diagram illustrates the main features and menu bars in QSP-II.

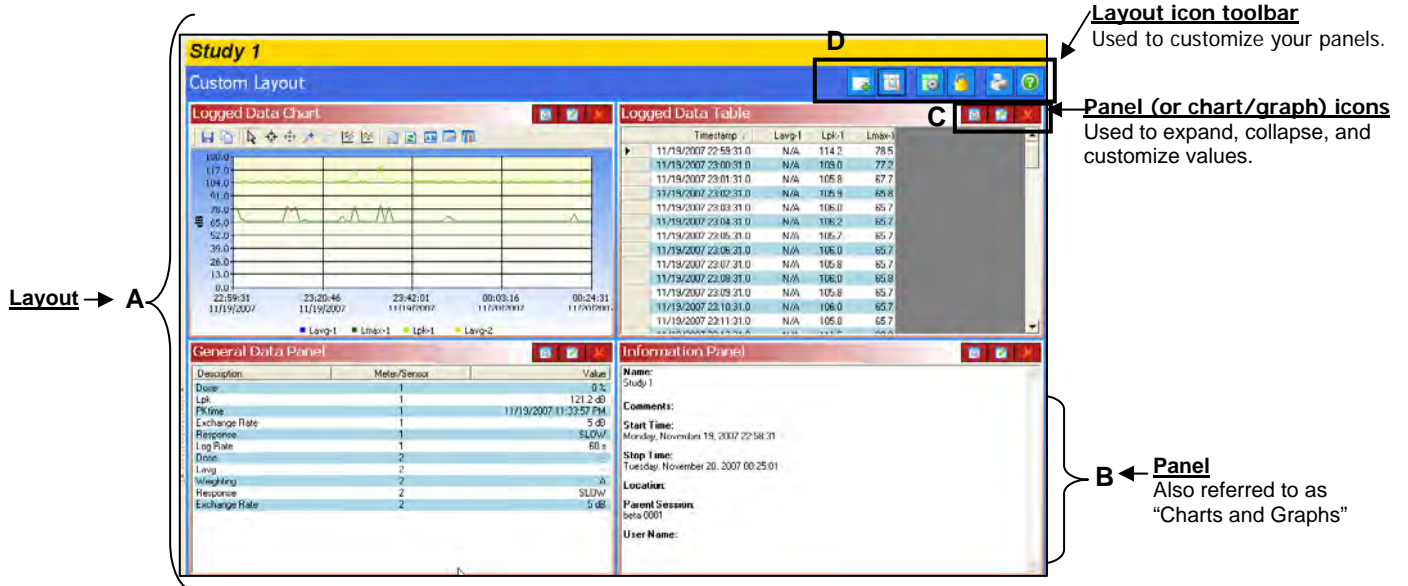






Figure 1-R: Example of Graphs and Charts

Graphs & Charts layout view	Explanation
A. Layout	QSP-II is divided into two panes (or sections). One is the layout view and the second pane is the "control pane". The layout is divided into "panels" which contain charts and graphs, calibration history, etc. You can add charts and/or graphs (by adding panels), move them in the appropriate position, and/or customize the data values.
B. Panel	For the Edge, the standard layout (or default template) has three panels. The panels can be moved, edited, and expanded or collapsed. (see "Chart and Graph icons")
C. Chart & Graph icons	Used to enlarge or hide a panel (also called chart or graph), edit the data, or close the view. <ul style="list-style-type: none">  <input checked="" type="checkbox"/> Expand or Collapse the panel (graph/chart)  <input checked="" type="checkbox"/> Edit (edit the parameters of the selected screen)  <input checked="" type="checkbox"/> Delete (closes the window)
D. Layout icon toolbar	This toolbar is used to add tables and/or charts, arrange tables or charts, manage the layout view, lock it, print reports and access to the help files.

Adding panels (charts/graphs)

1. Ensure you selected the appropriate study and are viewing panels (graphs/charts) on the right-hand side of your screen. (See Figure 1-K, page 8 for details.)
2. Click on the **Add** icon  .
3. Select a chart or graph. An edit screen may appear. Select the appropriate settings and click Ok. It will display on your screen.

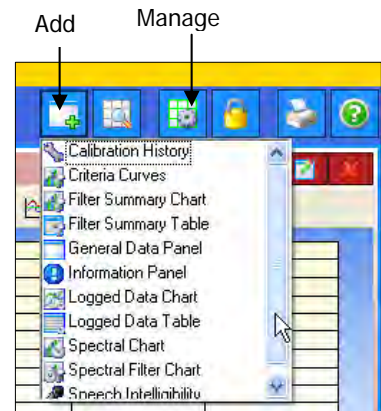




Figure 1-S: Adding panels

Saving your customized layout (charts/graphs)

You may have spent some time organizing your data by adding new charts and/or graphs, rearranging the panes (left-click on a graph/chart heading and drag and drop to a specific spot), and/or editing the logged data values. With the save template button, you can save your customized layout so every time you open a study the appropriate charts and graphs are displayed.

➤ How to save and apply a layout

1. Ensure you selected the appropriate study and are viewing panels (graphs/charts) on the right-hand side of your screen. (See Figure 1-K, page 8, for details.)
2. Click on the **Manage Templates** icon  (see layout icon toolbar in Figure 1-R.)
 - a. The Manage Session Templates screen will appear.
3. To create a new template, type a name in the **Template Name** field.
4. Click the Save **Template** button.
5. Select the appropriate template name in the "available templates field" and click the **Set Default Template** button

 **NOTE:** If you want to share the template with other users (i.e., create a corporate template and share the template with your co-workers), use the export/import buttons.

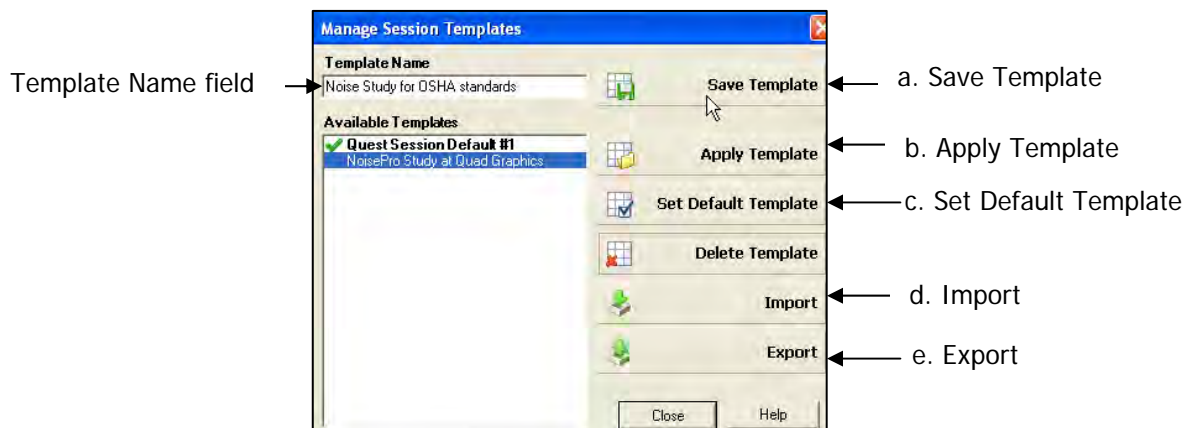


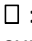


Figure 1-T: Saving a customized layout (charts/graphs)



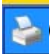
Creating Reports

QSP-II reports are saved in Adobe® PDF format for easy viewing and printing.

 **NOTE:** The report will print in the order that the panels (charts/graphs) appear on your computer screen. To rearrange, click on the title of a chart or table, drag, and drop a chart/table on the title bar of a panel.

-  : If your cursor displays this icon, it indicates the panel cannot be dropped into the current position of your cursor.
-  : If your cursor displays this icon, it indicates the panel can be inserted into the current position of your cursor.

➤ Generating a Session or Study Report

1. Left click on desired session (it will expand the session and the views will appear in the window).
2. Right-click a Session  or Study Node  and select **Print Session** from the menu.
 - The report will dock under the session or study (depending on if you chose session or study).
 - To remove, **right-click** the report and click **Delete Report**.
 - To save the report in an alternative folder/directory (i.e., on your desktop and then you can email it and share the information.), select **Save As** and add it to a directory or folder on your pc (or network).
3. Alternatively, select the **Printer Icon**  when the Session or Study data is displayed in the chart and tables panels.
 - ✓ When the Generate Reports Icon is selected, the following screen will appear.

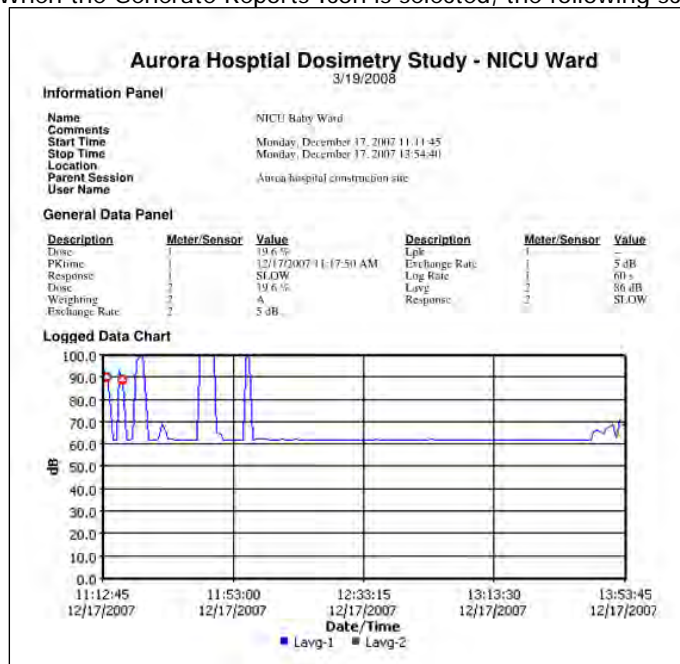


Figure 1-U: Sample SoundPro Report in QSP-II

Sharing reports

Once reports are created, you have the option of saving the data as an Acrobat Adobe file in case you want to back up the data and/or share the information with others via email. The following steps outline this process.

1. **Right-click** on the study report and select **Save As**.
2. Type in a file name, select the appropriate folder/file directory, and click **Save**.
 - a. If emailing, you will want to locate the file and attach it in a new memo.

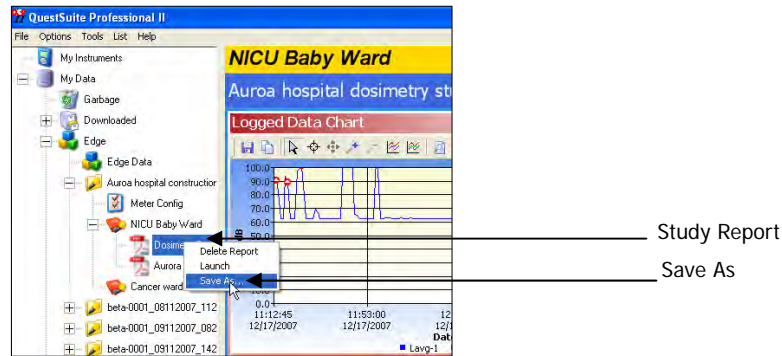


Figure 1-V: Saving reports as .pdf file

Backing up your noise data/Exporting a Node

QSP-II enables you to back-up your noise data; and at the same time, you can share this information with someone who also has QSP-II software through your network or email system.

1. **Right-click** on the node you wish to share (left-hand side of screen.)
2. Click **Export**. Type in a name and place it in an appropriate folder.
 - If you want to email the noise data, attach this as a file. The person receiving the file would then follow step 3 below.
 - This creates a "node" file and will save a .node file.

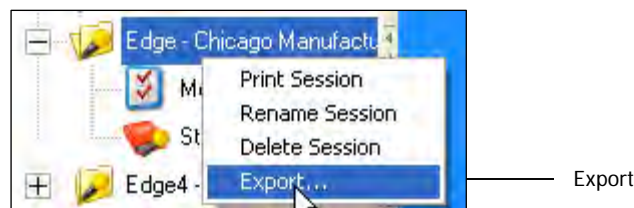


Figure 1-W: Exporting data for back-up or sharing of data

3. To view this data, right-click on "**My Data**" and select **Import**. Select the file from the location you saved it to. (If it is in an email, first save the node file in one of your folders and then follow this step).
 - The noise study will be stored (or filed) under "Downloaded" node.

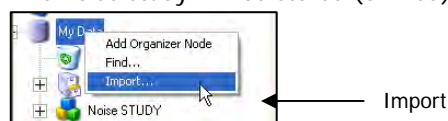


Figure 1-X: Importing data once it is exported