



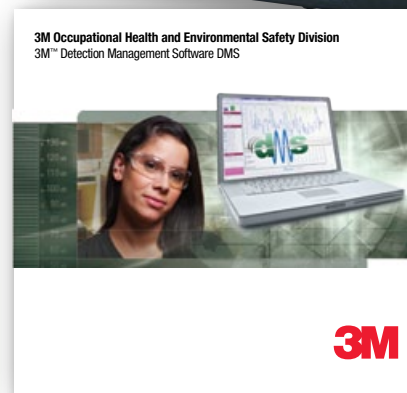
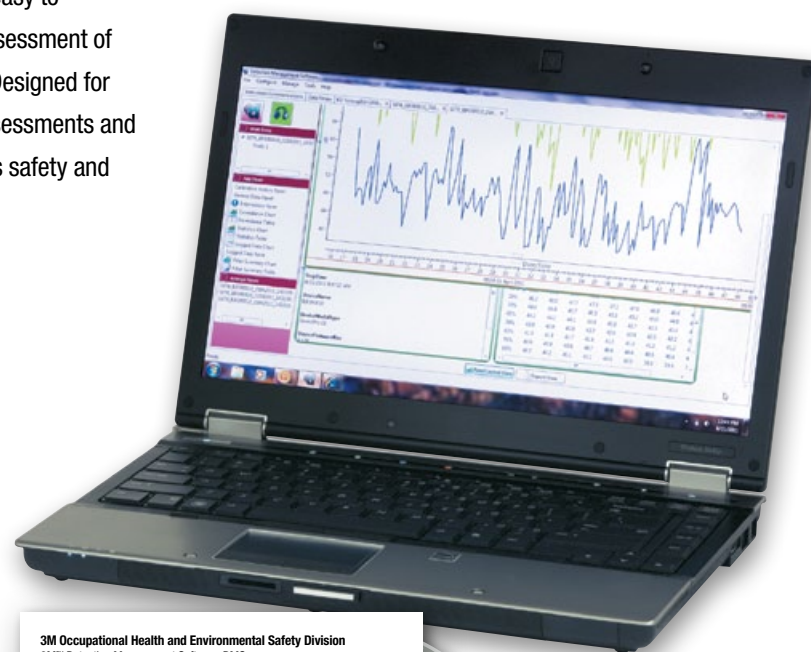
3M™ Detection Management Software DMS

The Detection Instrumentation System Solution

3M™ Detection Management Software DMS makes it easy to record, report, chart and analyze data collected for assessment of select occupational health hazards in the workplace. Designed for dosimetry, sound level measurements, heat stress assessments and environmental monitoring, this advanced software helps safety and occupational professionals:

- Retrieve, download, share and save instrument data
- Generate insightful charts and reports
- Export and share recorded data
- Perform “What If” analysis and recalculate data based on selected time intervals
- Set up instruments and check for firmware updates

The software integrates with 3M Quest data logging instruments and will help you improve both operating efficiency and reporting in acoustics, heat stress, and environmental monitoring.



Occupational Health & Environmental Safety Division
 Quest Technologies, a 3M company
 ISO 9001 Registered Company
 ISO 17025 Accredited Calibration Lab
 1060 Corporate Center Drive
 Oconomowoc, WI 53066
 Customer Service: 262-567-9157
 Toll Free: 800-245-0779

www.3M.com/detection

3M is a trademark of 3M Company, used under license in Canada.
 Please recycle. Printed in USA.
 © 2011 3M
 All rights reserved.
 098-609 Rev. H 12/11

3M Occupational Health & Environmental Safety Division 3M™ The Edge Personal Noise Dosimeter

QUEST
 TECHNOLOGIES
 now part of 3M



Cable-Free Intrinsically-Safe 3 Independent Dosimeters

The Edge family of lightweight personal noise dosimeters features advancements in user comfort and technology, making it easier than ever to monitor noise levels. Its compact, cable-free design mounts on the shoulder and weighs just three ounces, so it is both comfortable and easy to wear.

When used with new 3M™ Data Management Software DMS, users can activate three independent dosimeters in The Edge eg5 noise dosimeter model, allowing for simultaneous measurement against three industry standards.

With its MSHA, SIRA (ATEX), CSA (US and Canada) and Simtars (IECEx) Intrinsic Safety Approvals, The Edge eg5 noise dosimeter can be used in potentially hazardous environments such as mines, petrochemical sites, and manufacturing facilities. Its easy downloading, simple recharging, three independent dosimeters (eg5) and intrinsic safety approval (eg5) make it a powerful instrument your team can rely on.





Advanced Features for Monitoring and Analysis

Screen Displays

The Edge's easy-to-read screen displays SPL, Dose, L_{AVG} , L_{EO} , TWA, L_{MAX} , L_{MIN} , L_{PK} (peak) Exposure, Run Time and more. A visual warning is displayed when exposure measurements exceed certain industry standards.

Docking and Interface Options

This series is available with a 1- or 5-bay "EdgeDock" docking station for quick and easy recharging. The EdgeDock also downloads data to 3M™ Detection Management Software DMS for reporting, charting and analyzing exposure via the USB port to PC connection. Multiple EdgeDocks may be interfaced via the USB hub to the PC.

Rechargeable Batteries

These advanced dosimeters feature a rechargeable lithium polymer battery that helps deliver longer run times. The Edge's three-year battery life span can mean savings for you on replacement batteries.

Key Features

- Convenient cable-free design eliminates the need for troublesome microphone cable
- Thin, contoured mount hugs the shoulder; compact frame offers maximum comfort
- The eg5 model features the ability for a third independent dosimeter, allowing for simultaneous measurement against up to three industry standards
- DMS also makes it easy to report and export data, perform advanced calculations and generate powerful reports
- eg5 model has Intrinsic Safety approvals from MSHA, SIRA (ATEX), CSA (US and Canada) and Simtars (IECEx)

Select from Two Models

- **The Edge eg4:** Dual dosimeters and data logging/time history.
- **The Edge eg5:** Three dosimeters* and data logging/time history. Intrinsically safe dosimeter that offers simultaneous C-weighted and A-weighted measurements.

*Third dosimeter enabled through Detection Management Software.

Specifications for The Edge

FUNCTIONAL REQUIREMENTS INCLUDE:

Microphone: 1/4 inch prepolarized condenser (electret) field replaceable threaded microphone

Measuring range: 70dB - 140dB

Windscreen: Rugged foam permanently attached to a threaded mount for maximum protection

DOSIMETER:*

Independent Thresholds selectable from 70dB to 90dB or none

Independent Exchange Rates 3dB, 4dB or 5dB for each dosimeter

Independent Criterion Levels from 70dB to 90dB in 1dB increments

MEASUREMENT SETTINGS:

RMS Range: 70dB to 140dB

RMS Weighting: A or C

RMS Time Response: Fast or Slow

Frequency Weighting: A, C, Z

PEAK DETECTOR:

Peak Range: 110dB to 143dB

Peak Weighting: Selectable C or Z for models eg3 and eg4; Selectable A, C, or Z for the eg5 model (Peak is independent of the RMS dosimeter settings)

DISPLAYED DATA / VALUES:

- L_{AVG} or L_{EO}
- SPL
- Dose
- Projected Dose (eg5)
- Identity Field (assigns a custom name to The Edge)
- Current Date
- Max Level
- Threshold (TR)
- Run Time
- Exposure
- Min Level
- TWA
- Run/Pause
- Overload Indication
- L_{C-A} (eg5)
- SEL (L_{EP})
- Peak Level
- Upper Limit (UL)

DISPLAYED STATUS INDICATORS:

- Battery
- Memory
- Run/Pause
- Overload Indication
- Dose Exposure Indicator (Multicolored LED, user selectable)

ADDITIONAL FEATURES:

Calibration times displayed

Lock out security function (multilevel)

Device Setup: Easy quick setup via DMS software in English, French, Spanish, Italian and Portuguese

Data Logging: L_{AVG} or L_{EO} , Max, Peak and Overload Indication at one minute intervals

*eg4 has two independent dosimeters, eg5 has three independent dosimeters. Third dosimeter is enabled through Detection Management Software.

All Specifications Subject to Change

POWER / ELECTRICAL CHARACTERISTICS:

Battery: Lithium Polymer (Flat cell)

Battery Life: eg4 model 60+ hour, eg5 intrinsically safe 40 hours nominal without LED activated

Battery Charge: Quick charge in EdgeDock in 2 to 4 hours. Recommended daily download data with simultaneous battery charging for maximum efficiency

Memory capacity: 180 hours

Communications: Short haul serial Infrared (SIR) via the EdgeDock

STANDARDS:

ANSI S1.25 Personal Noise Dosimeters

IEC61252 Personal Sound Exposure Meters

Intrinsic safety: (eg5)

- EN 60079-0:2006, EN 60079-11:2007, EN 60079-26:2007
- IECEx certification number: SIM 08.0012
- ATEX Directive 94/9/EC for use in Potentially Explosive Atmosphere certification number: Sira 09ATEX2269
- CSA International (US and Canada) certificate number: 2283414
- MSHA Approval number: 18-A100008-0

PHYSICAL CHARACTERISTICS:

Weight: 3 ounces (85 grams)

Size: 3.5" long x 2.1" wide x .75" thick (88mm x 53mm x 19mm)*
*eg5 is .82 (21mm) thick

Case material: Engineered Polymer

IP rated 65

RoHS compliant

Lockable windscreen

Keypad: 4 keys – Up Arrow, Down Arrow, Run/Stop, On/Off, Enter

Display: 128x64 LCD

Alligator Clothing Clip / Suspender Clasp

Variety of other mounting methods for hard hats, etc.

DOCKING STATION: SINGLE AND FIVE BAY VERSIONS:

Communications via the EdgeDock and USB to PC

Typical recharge in 2 to 4 hours

Complete instrument fits neatly into EdgeDock without removing mounting devices

ENVIRONMENTAL CHARACTERISTICS:

Operating Temperature Range: -10 °C to 50 °C (14 °F to 122 °F)

Storage Temperature Range: -25 °C to 60 °C (-13 °F to 140 °F)

Humidity Range: 0 to 95% Non-Condensing