

# NEPHELOMETER SOFTWARE MANUAL

16333 Bay Vista Dr. • Clearwater, FL 33760 USA  
800-451-9444 / 727-530-3602  
www.Sensidyne.com • info@Sensidyne.com

# Table of Contents

<b>1. Getting Started.....</b>	<b>3</b>
1.2 Install Driver and Software .....	3
1.2 Connect Device for the first time .....	3
<b>2. Environmental Library.....</b>	<b>5</b>
2.1 Edit Library Entry.....	6
<b>3. Device Operation.....</b>	<b>8</b>
3.1 Profile Folder .....	11
3.1.1 Adding a profile entry.....	12
3.1.2 Changing profile entry order, removing entry.....	14
3.1.3 Sending Profile Set to Device.....	15
3.2 Utility Folder.....	17
3.3 Calibration Folder.....	18
3.4 Alarm Folder.....	20
3.5 Data Folder .....	22

# 1. Getting Started

## *1.1 Install Driver and Software*

Insert the CD-ROM that comes with the device and

1. Install USB Driver
2. Install Software

## *1.2 Connect Device for the first time*

When the device is to be connected to the computer for the first time, it may take awhile for the computer to recognize this USB device and install drivers properly.

Please follow the general guideline below

If this is the first time this device is to be connected.

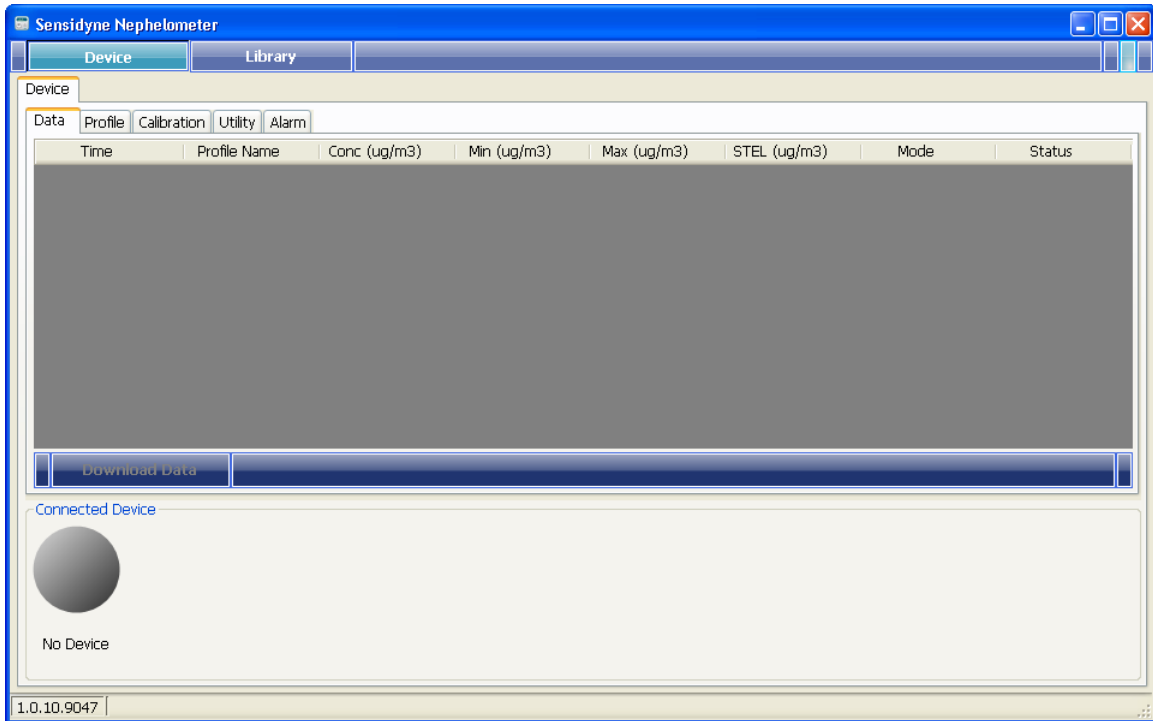
1. Close this program if it is running.
2. Power on device by press on the Start/Stop button.
3. Connect the device with the USB cable to the computer.
4. Wait for the computer to recognize it and install all the drivers.

After the computer has recognized this device for the first time, you can

1. run the program first, plug in the device, or
2. plug in the device and then run the program

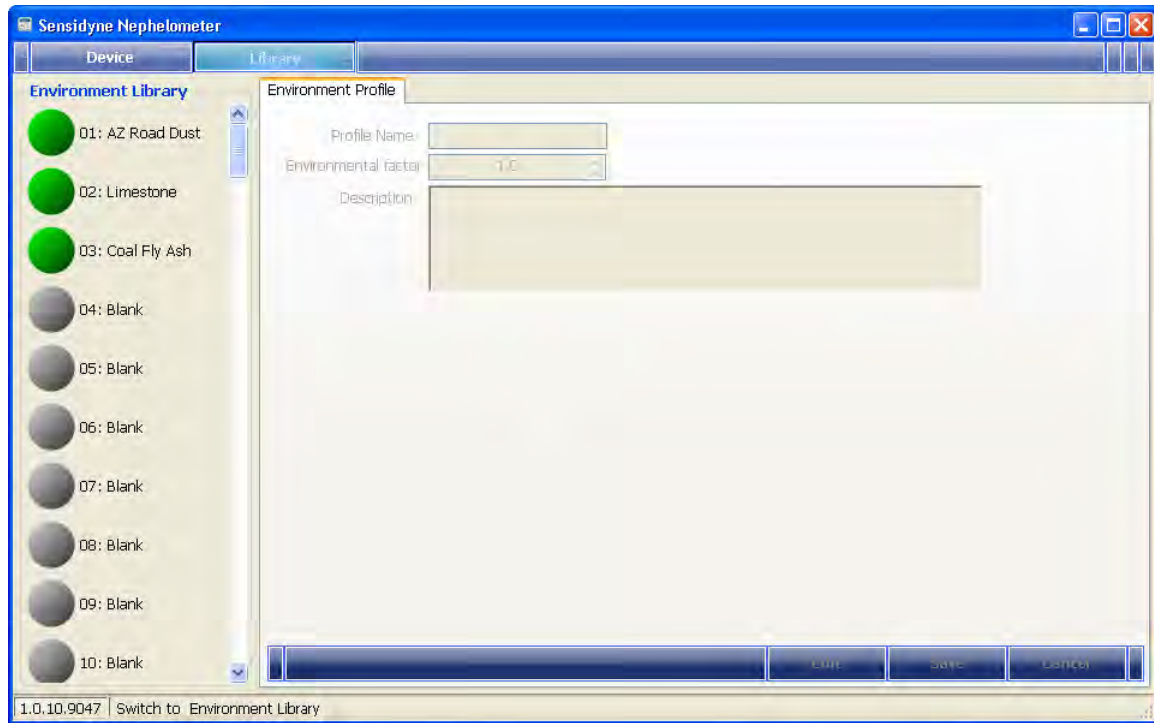
Either way, program will detect the connected device automatically.

It is not necessary to connect a device if you are only going to build the Environmental Library, see section 2. Environmental Library.



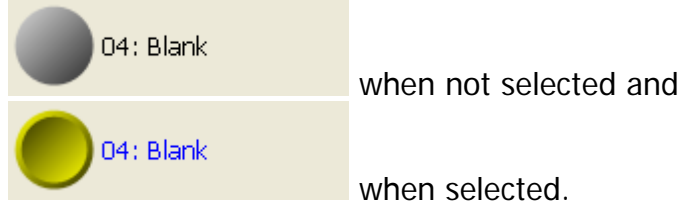
By default, program starts with Device Folder **Device** selected. Click on **Library** to go to the Library Folder for Adding/Editing Environmental Library entries.

## 2. Environmental Library

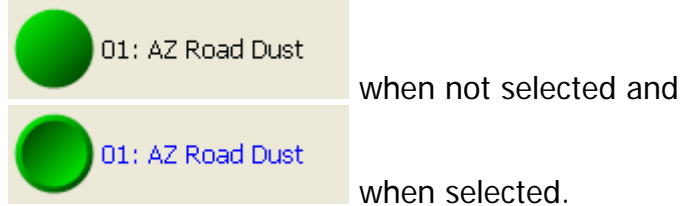


Click on the Library tab to select.


For blank library entry, program displays it as

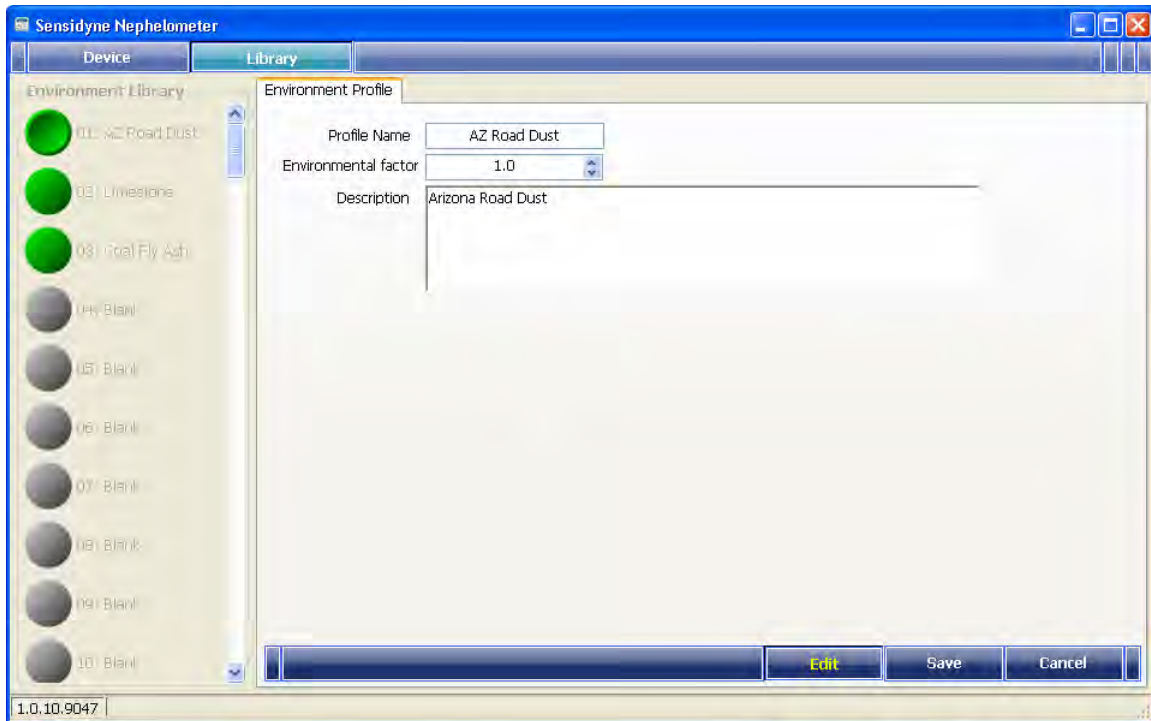


For existing library entry,





## 2.1 Edit Library Entry

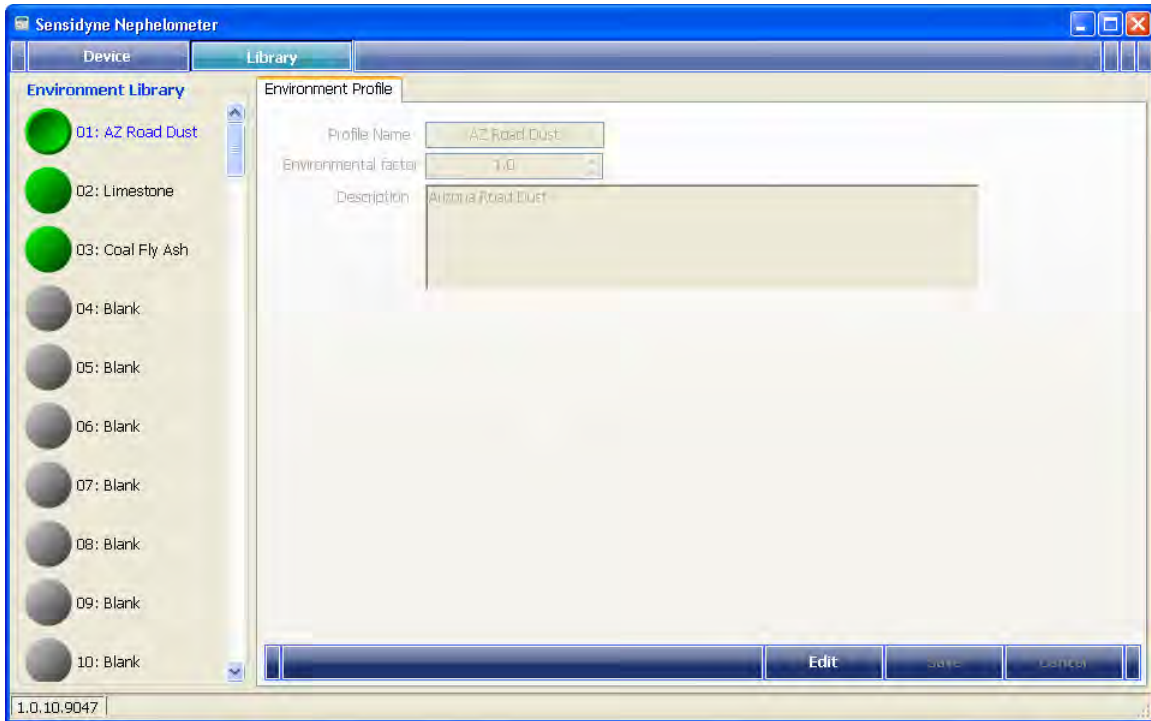
 to enter edit mode for the selected entry, as shown in the following page.



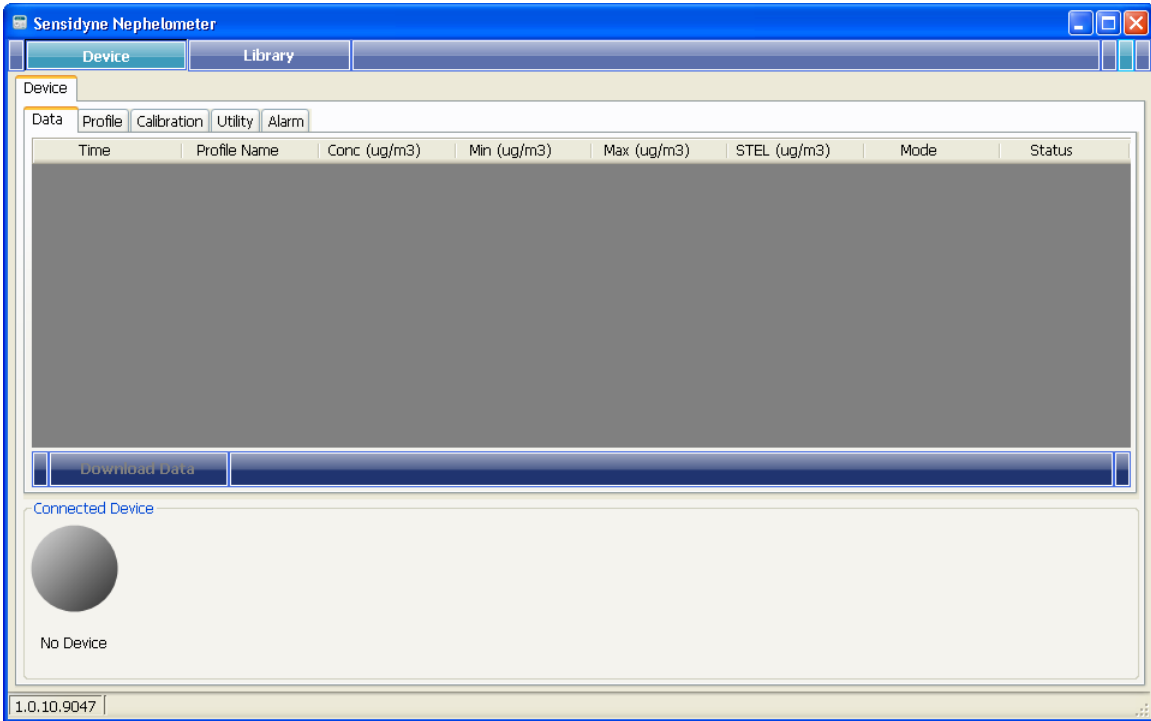
Enter Profile Name, Environmental factor and Description and then click on

 to save information or

 to discard edited data and restore the original information.



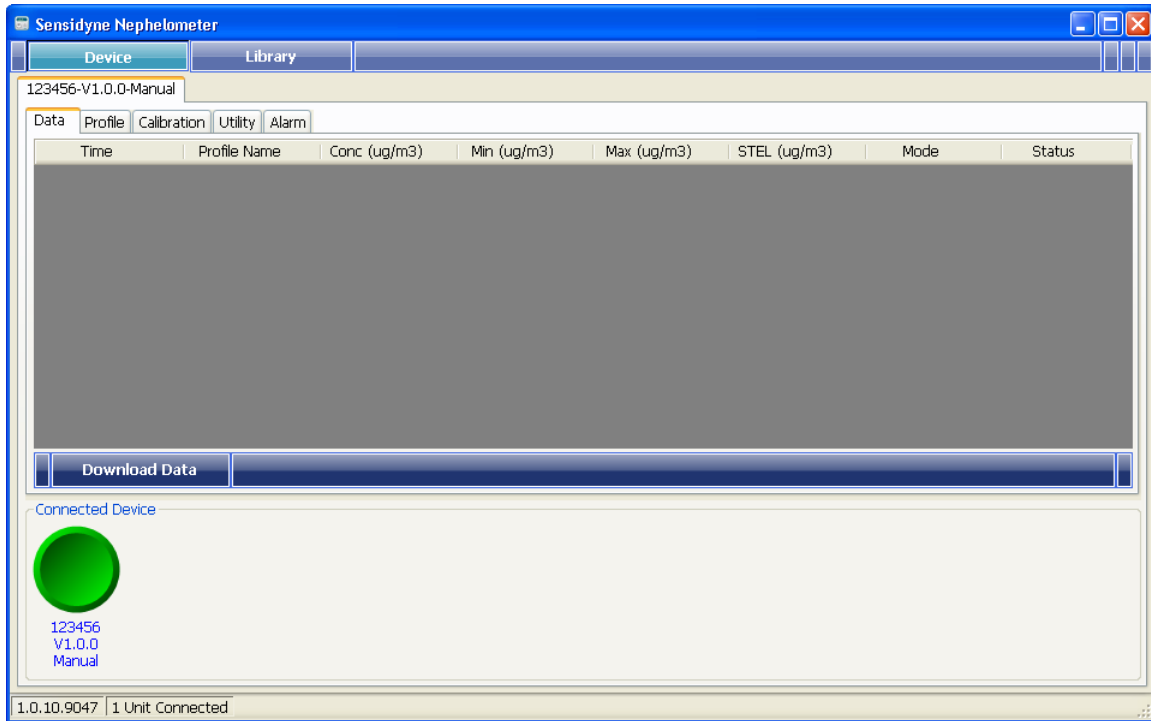
### 3. Device Operation



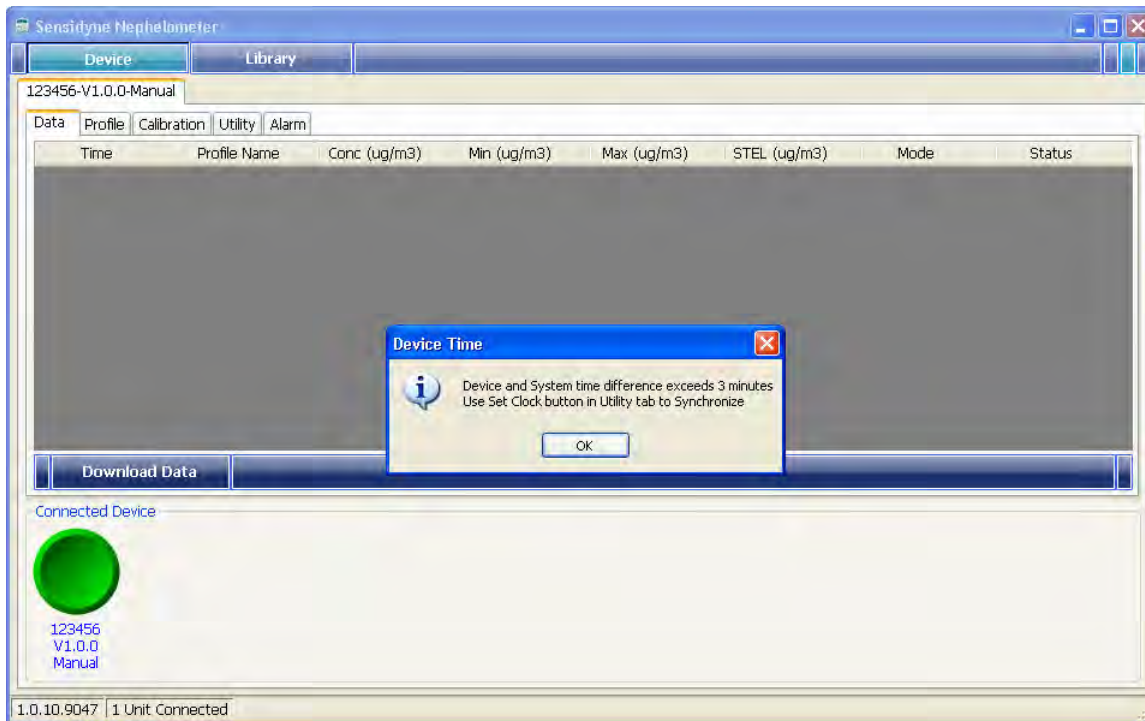
Connect Sensidyne 80570 to the USB port of computer, the program will detect the connected device automatically and its serial number; “123456” in this example, along with the firmware version, e.g. “V1.0.0”, and current operating mode, “Manual” will be shown as a tag. The same information is also shown on the folder tab, as shown in next page.








If this is the first device connected, it will be selected automatically.

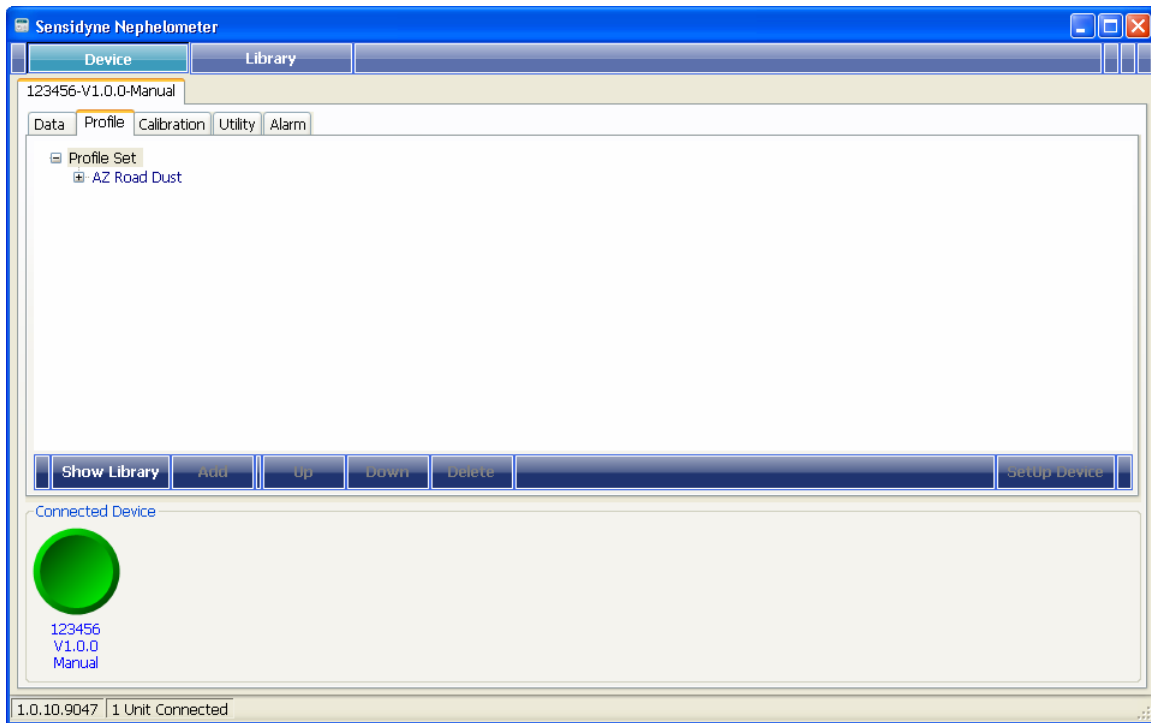


When a device is connected and detected, its clock will be checked. If time difference between this device and computer exceeds 3 minutes, a message will show up, as above.

Use  to synchronize device's clock, see section 3.2, Utility Folder.

### 3.1 Profile Folder

Click on the Profile folder, the existing profiles in the device are shown in a tree style hierarchy.



### 3.1.1 Adding a profile entry

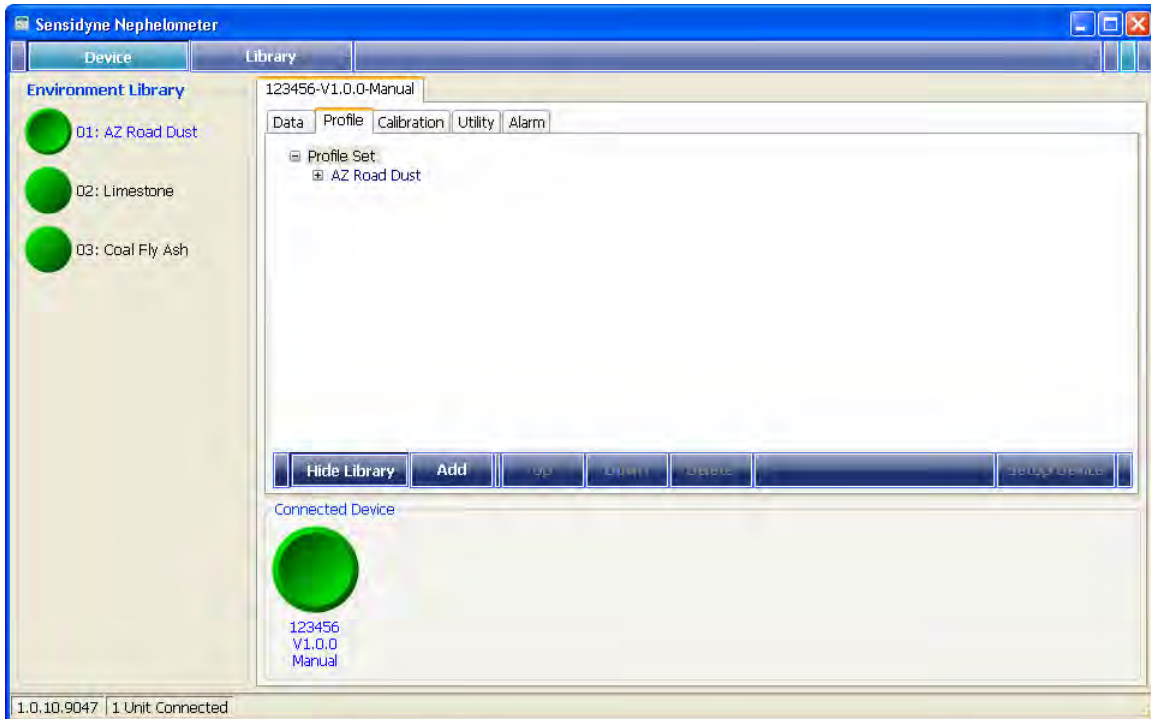
Show Library

to open up the Environmental Library.

Hide Library

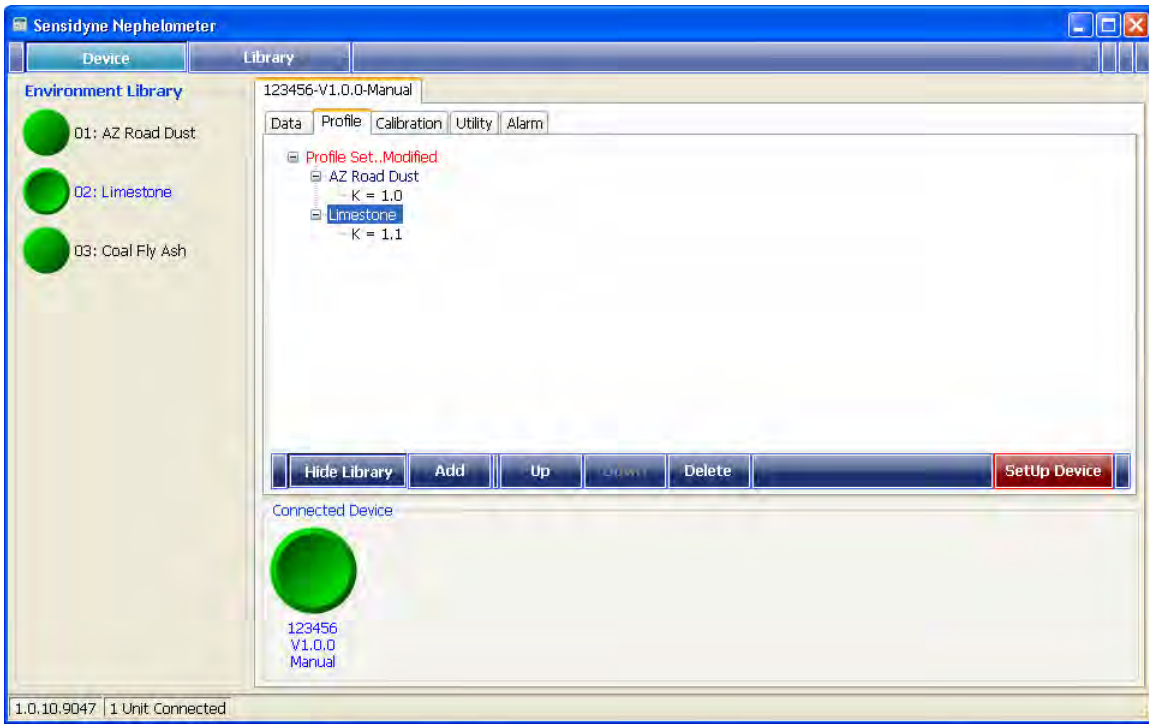
to close the Environmental Library.

Only the valid library entries will be shown in the library box for selection.

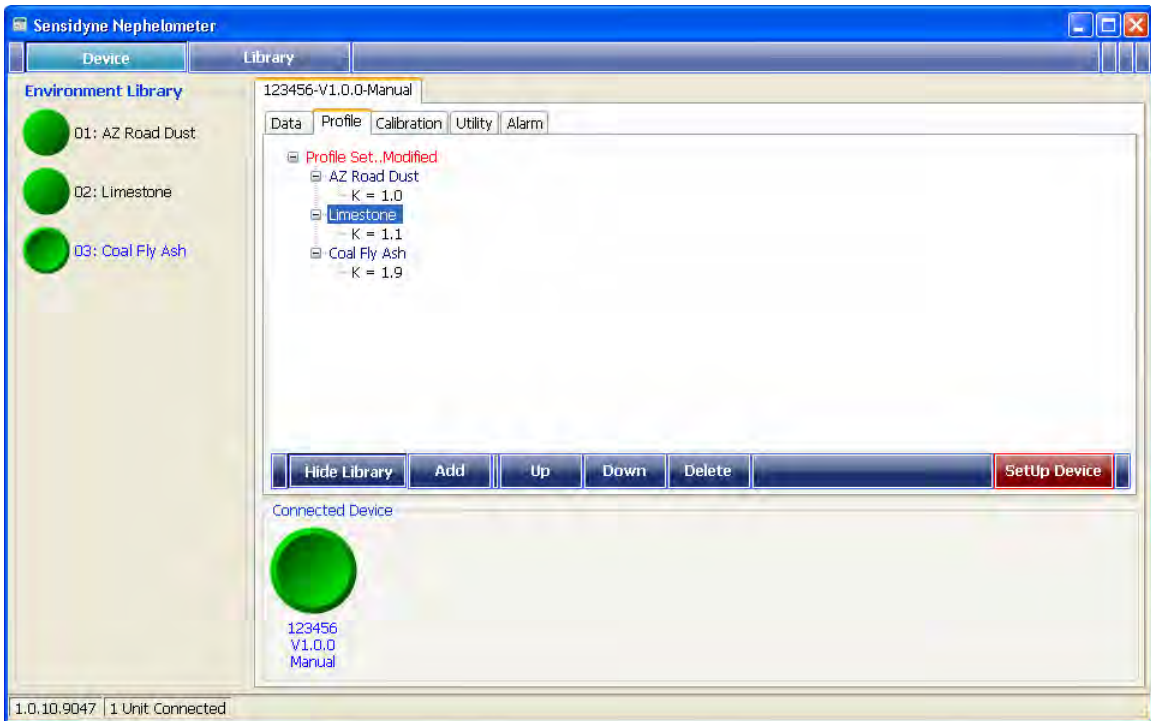


**Add**

to add this selected library entry to the device's profile set.



### 3.1.2 Changing profile entry order, removing entry



Select the profile entry displayed on the Device's [Profile Set] tree,

or  to change the order of this selected entry on the tree hierarchy.

to remove this selected entry from the tree hierarchy.

### 3.1.3 Sending Profile Set to Device

Whenever an entry is added to, moved up/down or deleted from the tree hierarchy, the root item (the top item) will be changed to red color and displayed as "Profile Set..Modified" and

**SetUp Device**

will become highlighted.

After all the modifications are done, click **SetUp Device** to send [Profile Set] to the device.

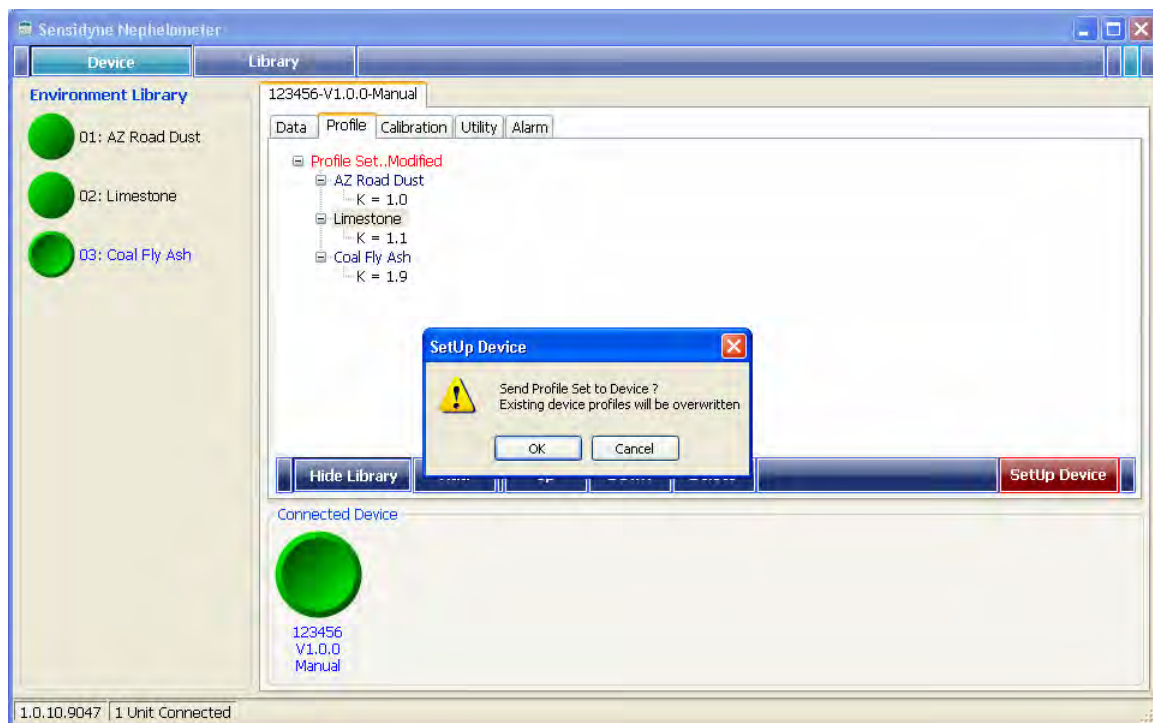
A message window will show up for confirmation,

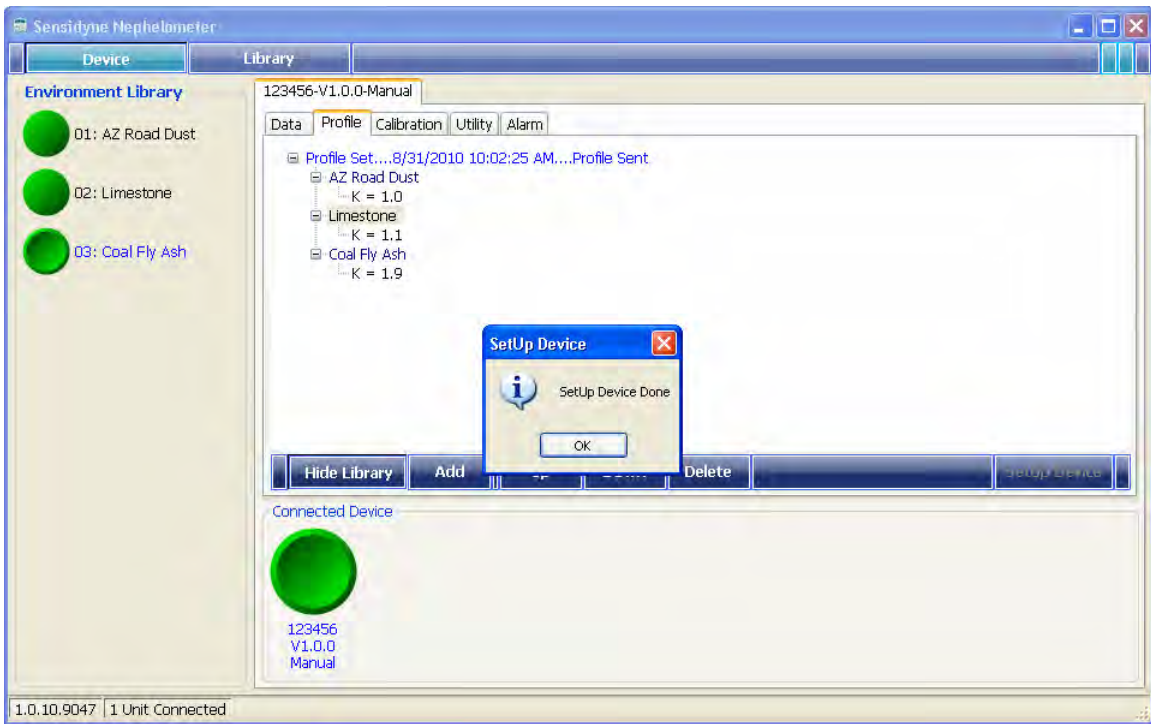
OK

to start sending profile to device.

Cancel

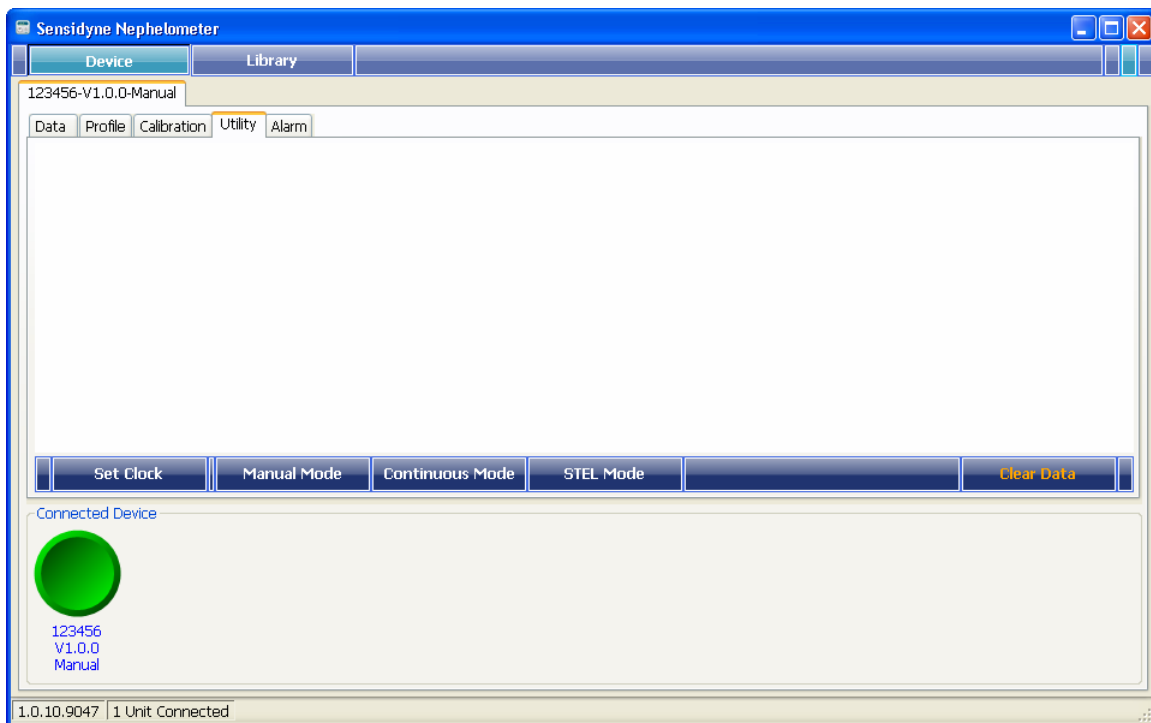
to return to Profile Editing.










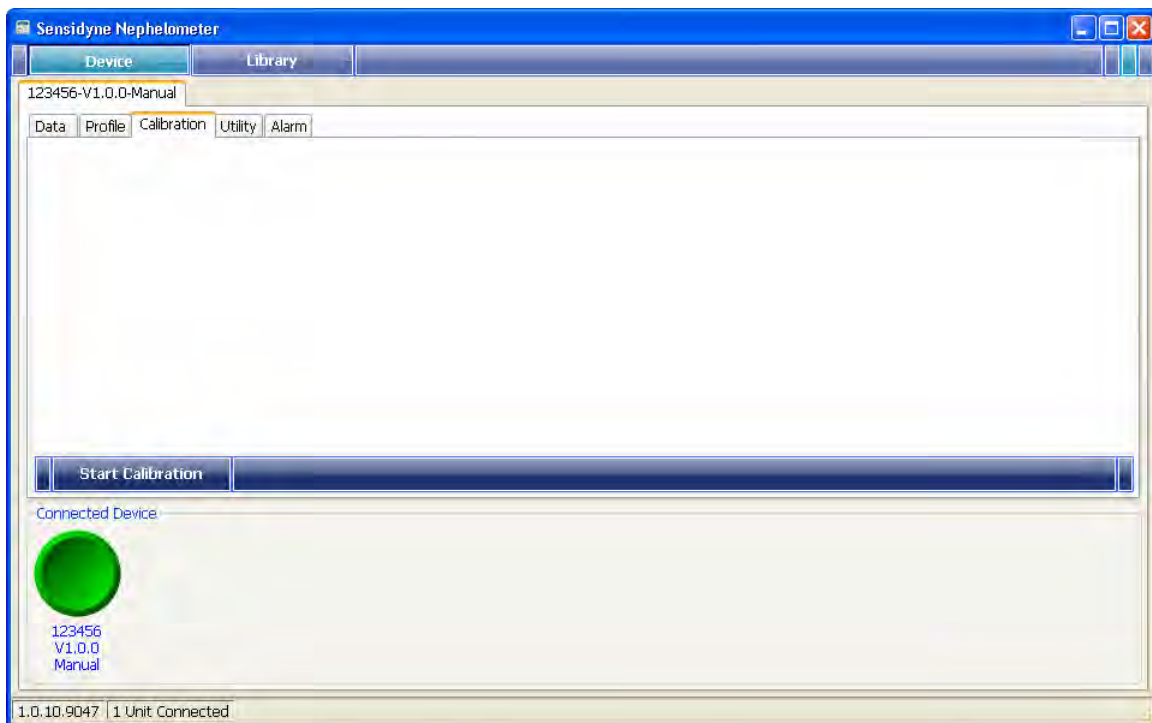


### 3.2 Utility Folder



-  to synchronize device's clock with computer's.
-  to set device to Manual Mode
-  to set device to Continuous Mode
-  to set device to STEL mode
-  to clear device data file.

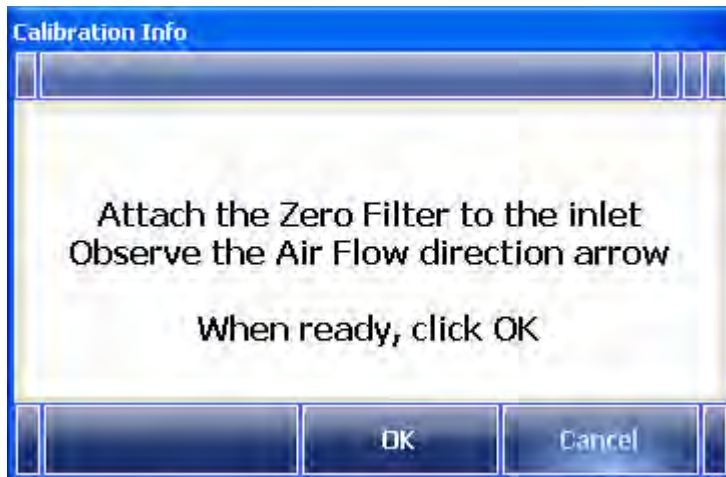
### 3.3 Calibration Folder



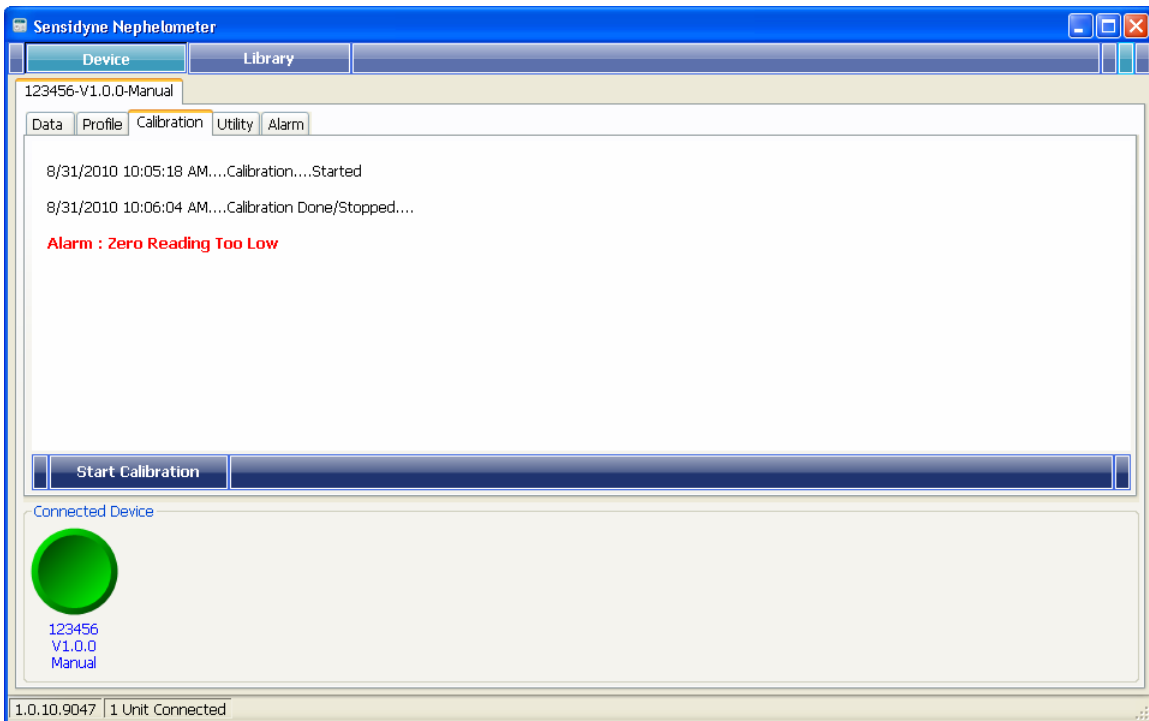
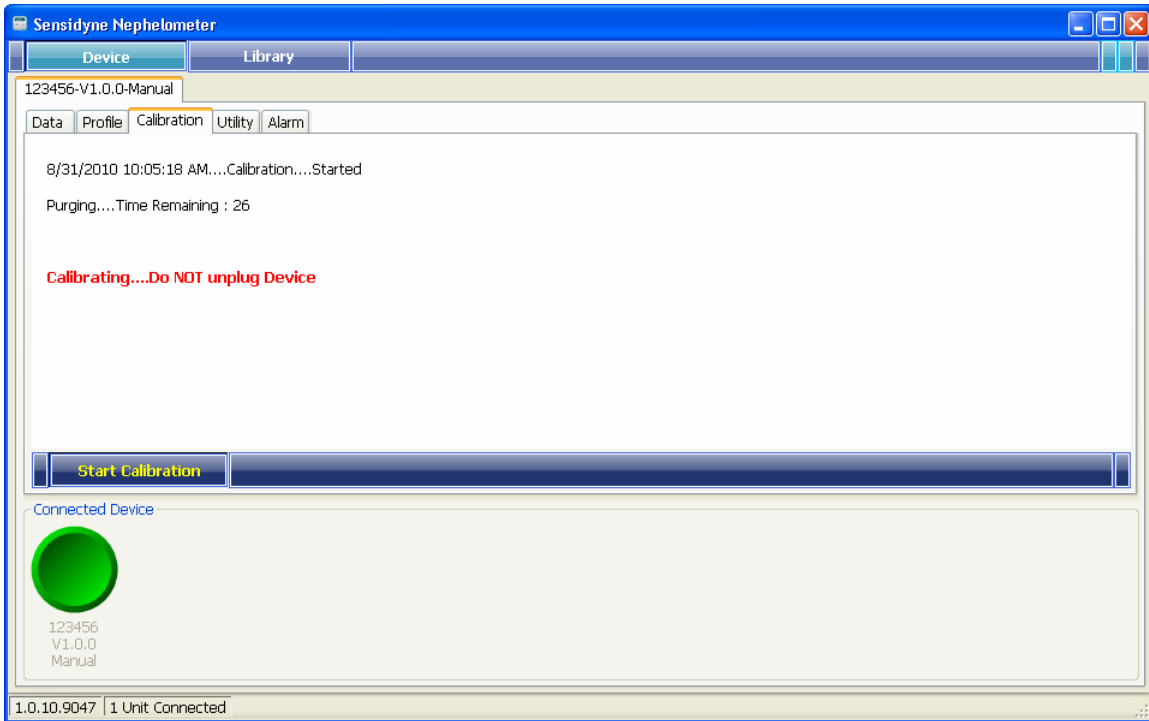
**Start Calibration**

for starting zero calibration process.

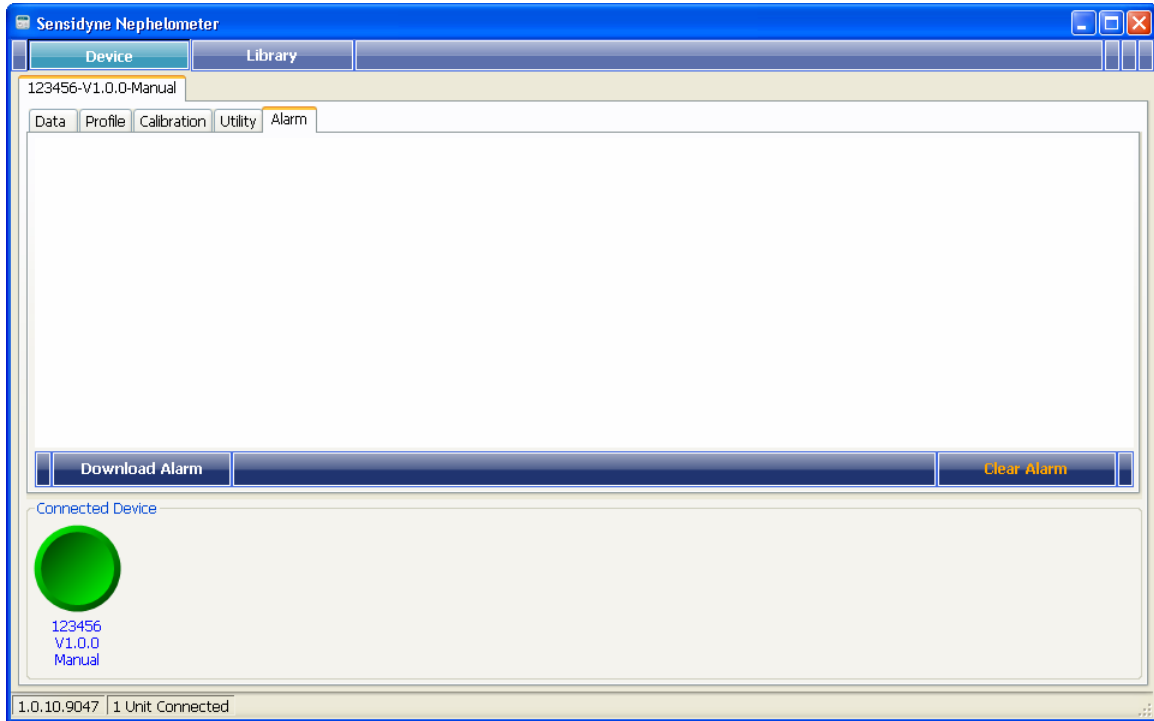
A message window will show up



Follow the instructions in this message window and click **OK** to start.



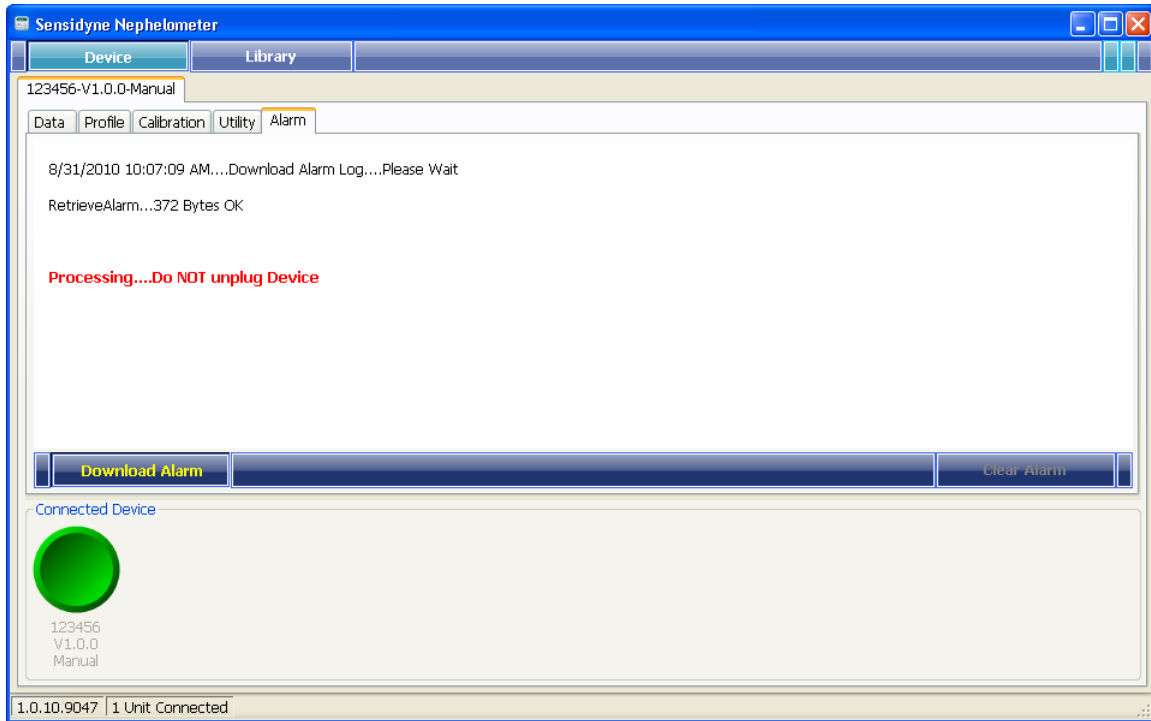
### 3.4 Alarm Folder



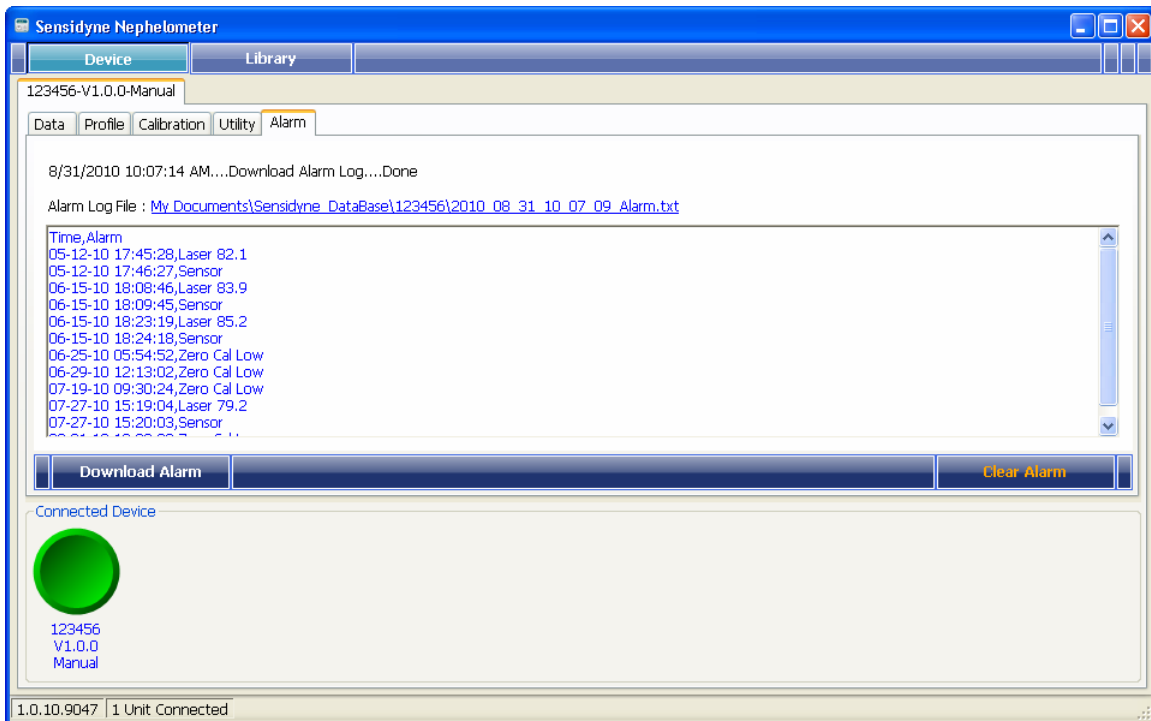
To Clear Alarm Log File



To Down Load Alarm Log File

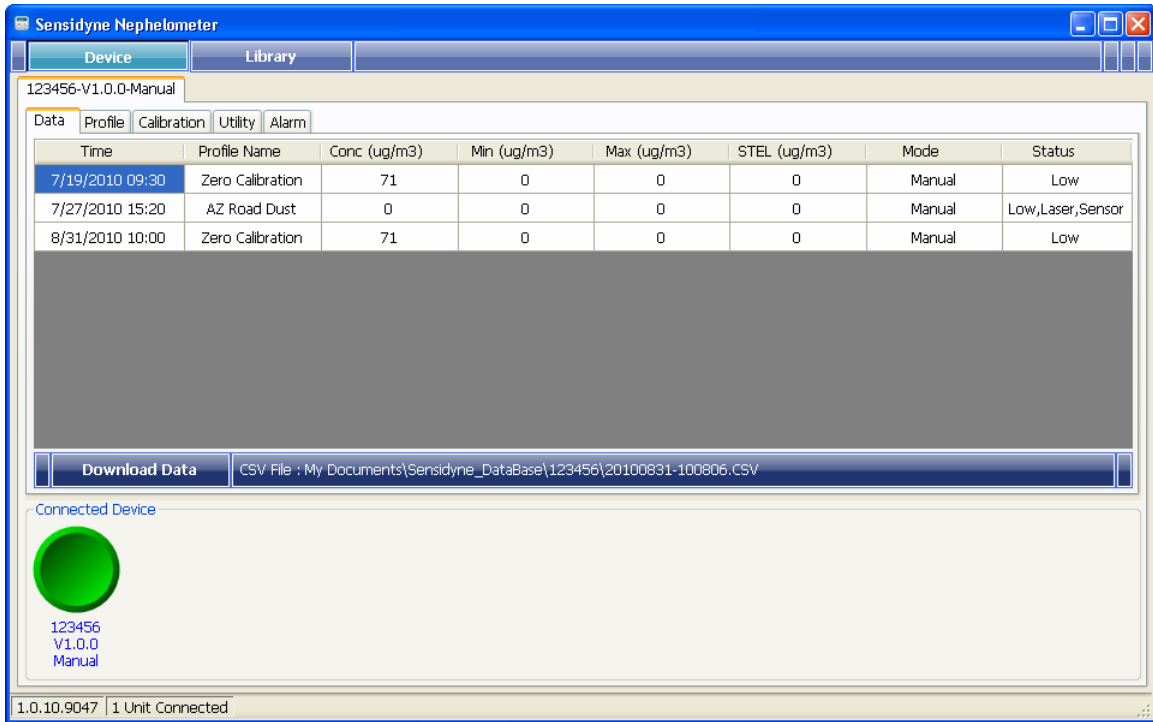


Downloading alarm record.



When alarm retrieval is done, records will be displayed, as above.

### 3.5 Data Folder



**Download Data**

to start downloading data from the device.

When data retrieval is done, record(s) will be shown in the data grid, as shown above. Records will be save in a CSV file located in a sub folder named "Sensidyne\_DataBase\xxxxx" under "My Documents", where xxxxx stands for the device's serial number.

CSV File : My Documents\Sensidyne\_DataBase\K0124\20100512-084916.CSV

A quick link to open up this CSV file.

This page intentionally left blank



***SENSIDYNE***<sup>®</sup>  
***Industrial Health & Safety Instrumentation***

16333 Bay Vista Dr. • Clearwater, FL 33760 USA  
800-451-9444 / 727-530-3602  
[www.Sensidyne.com](http://www.Sensidyne.com) • [info@Sensidyne.com](mailto:info@Sensidyne.com)