

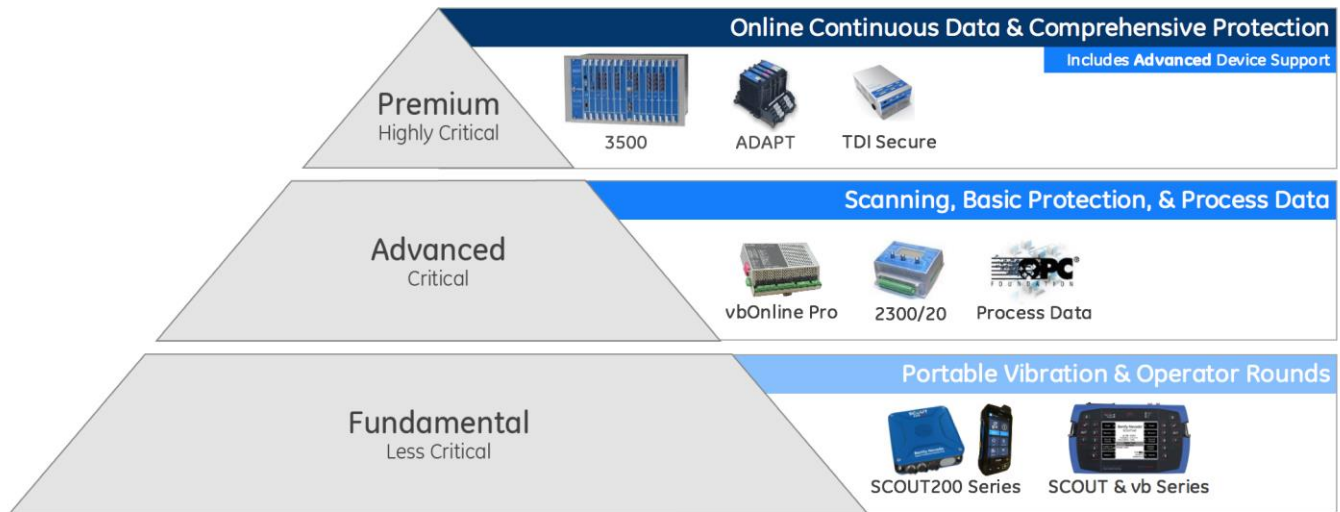


System 1*

Machinery Condition Monitoring

Industrial Packages

System 1* represents GE Bently Nevada's flagship condition monitoring (CM) solution with seamless integration to our industry leading line of online continuous, scanning, basic protection, & portable devices. **System 1 Industrial Packages** are designed to enable complete plant-wide monitoring for your facility. The software is licensed based on the size of your facility, which provides complete flexibility to connect to the BN field devices of your choice without considering a-la-carte import licensing. Build out your plant-wide CM strategy with software fully licensed and ready to connect to your equipment.



System 1 Packages

Keys to a Successful CM Program

Bently Nevada Solution Scope



Establishing and maintaining a best-in-class CM program at your facility requires equipment knowledge with an understanding of failure modes and operational criticality combined with a cross functional team, process rigor, and enabling technology. Bently Nevada offers flexible solutions ranging from product delivery with deployment services to complete solution coverage through a supporting service agreement where we partner with your facility to manage the CM program.

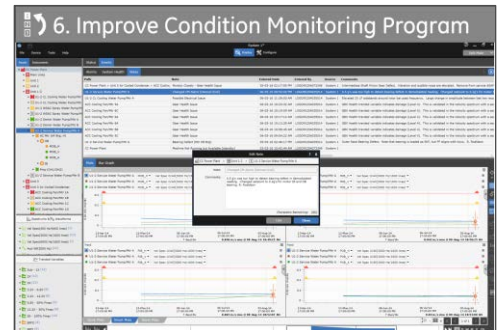
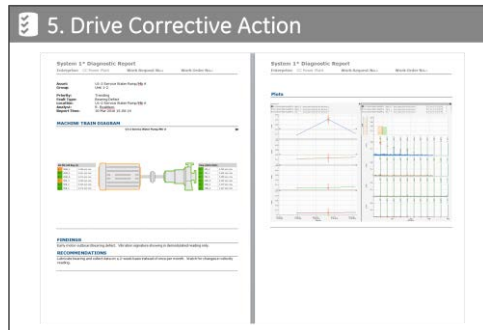
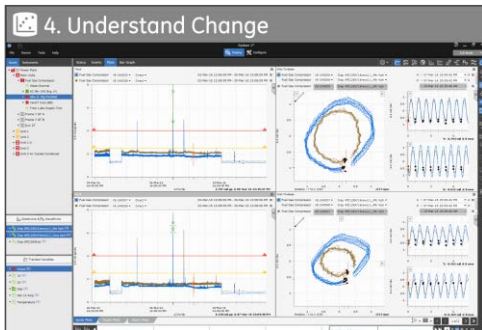
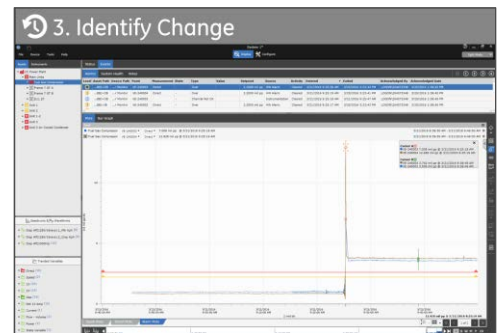
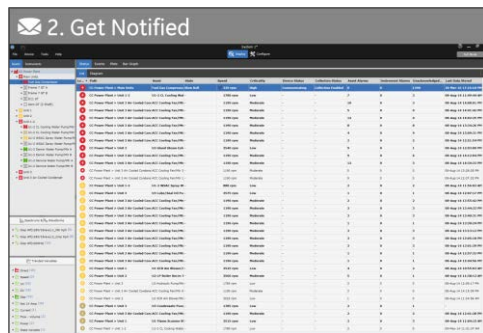
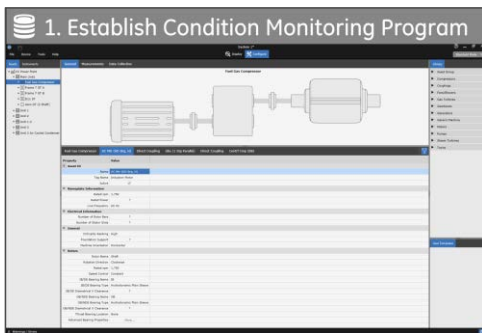


S1 The Evolution of System 1*

System 1 represents the core of Bently Nevada's CM solution and the **latest version** represents a refreshed approach in our mission to provide users with a single ecosystem for plant-wide machinery management.

Get Connected to Bently Nevada's best-in-class line of Online and Scanning devices, and once connected, **Get Insights** from this data to monitor the health of your equipment over time.

- Leverage CM alarms to be notified when a change in equipment operation has been detected
- Utilize long-term trended data to determine whether change warrants further investigation
- Deep dive to identify root cause with a complete dataset and best-in-class advanced plotting
- Share supporting information with team members when necessary
- Adjust CM alarms and add observational notes to improve your CM program over time



User Experience

Modern consumer software applications have pushed the envelope when it comes to user experience; we believe the same expectations apply for industrial CM applications

- ✓ Modern and Intuitive Interface
- ✓ Continuous User Involvement
- ✓ User Driven CM and Diagnostic Workflows

Accessibility

Successful CM programs require collaboration between departments and controlled access to the tools

- ✓ Data replication to view data on Business Network
- ✓ Client/Server Deployment Model (2 Ports)
- ✓ 2X/Citrix® Enabled
- ✓ System 1 Fleet Connectivity

Capability

System 1* provides scale when it comes to database management, diagnostics, and work prioritization

- ✓ High resolution trend, alarm, & startup/shutdown data
- ✓ Short-term black box flight recorder for trend data
- ✓ Anti-Friction & Hydrodynamic Bearing Diagnostics
- ✓ Diagnostic Reporting

Embedded Expertise

System 1 differentiates itself by providing equipment-focused solutions and best practice configuration & diagnostics

- ✓ Equipment State-Based Data Collection & Alarming
- ✓ Equipment Models drive best practice configuration
Technical Associates & ISO configuration wizards

S1 Package Ordering

General Industrial Package

3071/70 System 1 for Industrials

3071/70-AA-BB-CC

AA: Industry Type

- 01 – Pulp and Paper
- 02 – Air Separation
- 03 – Sugar Production
- 04 – Wastewater
- 05 – Drilling Rigs
- 06 – Steel Production
- 07 – Food & Beverage
- 08 – Manufacturing
- 09 – Pharmaceuticals

BB: Package Size

- 01 – Small Database
- 02 – Medium Database
- 03 – Large Database
- 04 – Extra Large Database

CC: Quantity of Server Licenses

– **Numeric Entry** [1→25]

Package	Online Continuous CM	Scanning & Process CM	Portable CM
Premium+	✓	✓	✓
Premium	✓	✓	
Advanced+		✓	✓
Advanced		✓	
Fundamental			✓

Industrial Packages Include

- ✓ Premium+ license(s)
- ✓ Unrestricted device import (Limits based on server)
- ✓ Unrestricted process data import (OPC DA)
- ✓ Unrestricted process data export (OPC DA)
- ✓ Unlimited Display Clients

Industrial Packages Do Not Include

- ✓ Database Replication

Power Generation Perpetual Package

3071/80 System 1 for Power Generation Perpetual

3071/80-AA-BB-CC

AA: Package Option

- 01 – New Order
- 02 – Expansion Order

BB: Plant Output (MW)

– **Numeric Entry** [1-30,000 MW]

CC: Quantity of Server Licenses

– **Numeric Entry** [1→25]

3500 Series



3500 Monitoring System – Full Rack

/22, /25, /32, /33, /40, /42, /44, /45, /50, /60, /61, /64, /65

Standard & M series monitors

- ✓ 14 monitor slots with simultaneous sampling
- ✓ 1 sec trend / 10 min waveform data capture
- ✓ High resolution alarm data capture
- ✓ High resolution startup/shutdown data capture

3500 Monitoring System – Mini Rack



Same monitors as Full Rack

- ✓ 7 monitor slots
- ✓ Same capabilities as Full Rack

TDI Secure



/42E /45E /PV

All functionality of 3500 TDI (/22):

- ✓ 24 simultaneous Vibration + 24 Process points + 4 Tachs
- ✓ Connection to non-Bently vibration systems
- ✓ Cyber security solution for separating protection and CM

Distributed Series



ADAPT Monitoring System

/40, /44, /46

- ✓ 12 simultaneous monitoring points + 2 Tachs
- ✓ 1 sec trend / 10 min waveform data capture

Condition Monitoring & Basic Protection



vbOnline Pro Monitoring System

- ✓ 12 simultaneous monitoring points + 2 tachs
- ✓ 30 sec trend / 10 min waveform data capture
- ✓ Simultaneous Alarm Snapshot (1 per 30 sec)

2300 Monitoring System



- ✓ 2 simultaneous monitoring points + 1 tach
- ✓ 1 sec trend / 10 min waveform data capture

Process Data



OPC DA Import

- ✓ Improve CM capability with process correlation
- ✓ License includes over 1000 tags for a System 1 Server
- ✓ 1 sec trend data capture

OPC DA Export

- ✓ License includes up to 10000 tags for a System 1 Server
- ✓ 1 sec data export rate

Portables



Analyzers & Data Collectors

- ✓ 2 & 4 Channel Models
- ✓ Hazardous Area Approvals

Database Replication

3071/16-AA-BB-CC System 1 Replication

AA: License Value of Tx Server(s)*25% (# - 1→n)

BB: Quantity of Rx Server Licenses (# - 1→n)

CC: Physical Installation Media

01 – **No (Default)**

02 – **Yes**

(AA) What is a Tx Server?

- ✓ Conduit to move data to the business network
- ✓ Contains config info and connection to devices

(BB) What is an Rx Server?

- ✓ Database that mirrors the S1 server on the Plant Network
- ✓ Supports 80-90% of daily CM tasks

Specifications

Refer to "System 1 Evolution Datasheet 108M5214" for detailed specifications & product capabilities

© 2016-2017 Bently Nevada, LLC All rights reserved.

* Denotes a trademark of Bently Nevada, LLC, a wholly owned subsidiary of General Electric Company.

All product and company names are trademarks of their respective holders.

Use of the trademarks does not imply any affiliation with or endorsement by the respective owners.

The information contained in this document is subject to change without prior notice.

Printed in USA. Uncontrolled when transmitted electronically.

1631 Bently Parkway South, Minden, Nevada USA 89423

Phone: 1-775.782.3611 www.GEmeasurement.com