

FITPRO+™ SOFTWARE V3

IMPORTING DATA

FROM FITPRO V2 & FITPLUS3

APPLICATION NOTE RFT-020 (US)

This quick reference guide provides instructions for importing data into a FitPro+ v3.0, v3.1, or v3.2 software database from an older FitPro v2 software or FitPlus3 software database. For additional information refer to the FitPro+ Fit Test Software Manual.

Database Modules

Fit Test Software	Database Module (Format)
FitPro+ v3.0, v3.1, and v3.2	MS Access® (<i>new format</i>)
FitPro v2	MS SQL Server® 2005 Express
FitPlus3	MS Access® (<i>old format</i>)

MS = Microsoft®

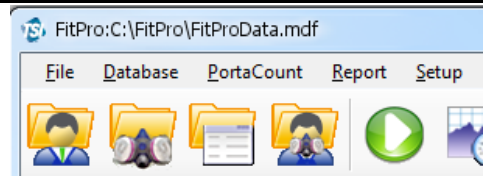
Locating a FitPro v2 Software & FitPlus3 Software Database

If you do not know where your FitPro v2 software or FitPlus3 software database is located, it is important to find this information before proceeding with the importing instructions below.

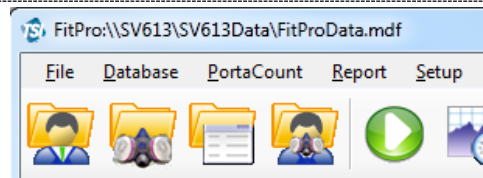
Open the FitPro v2 software or FitPlus3 software. The database location is displayed in the very upper left corner of the main window. Ensure the correct database is selected, go to **Database | Change Active...** if it is not.

Note

If the database is located on a drive such as "C:\\" or "D:\", etc., it is likely located on the host (local) computer.



If the database location is preceded by "\\\" characters, it is located on another computer, shared drive or server and being accessed across a network. The server name is the path immediately following the "\\\" in the example here "SV613".



Importing Data from a FitPro v2 Database

This procedure assumes you have installed the FitPro+ v3.0, v3.1, or v3.2 Fit Test Software, and have the previous version of software, FitPro v2, installed as well. There may be slight variations in the screens you see compared to the examples provided below, but the process should be similar.

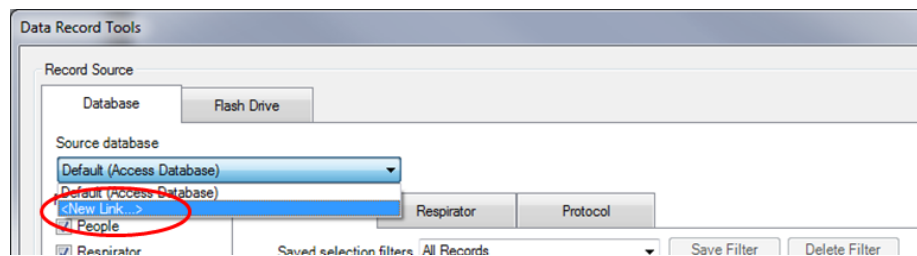
Note

FitPro v2 Fit Test Software must remain installed on the computer in order to successfully convert the database.

FitPro v2 software and FitPro+ v3.0, v3.1, and v3.2 software can coexist. Installing FitPro+ software and converting FitPro v2 software databases to the FitPro+ software format does not alter your FitPro v2 software installation in any way.

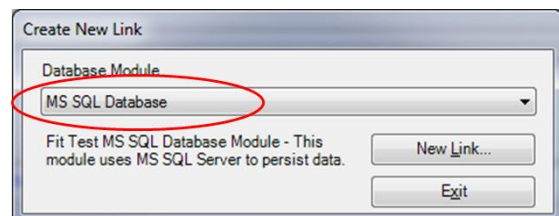
1. To begin, locate your FitPro v2 software database.
2. Open the FitPro+ v3.0, v3.1, or v3.2 Fit Test Software.
3. Select **Database | Data Record Tools...** to open the Data Record Tools window.

4. First, select your Source Database. This will be the older FitPro v2 Database. Click the drop down arrow next to the Source Database list, and select **<New Link...>**.



5. Select **MS SQL Database** as your Database Module.
6. Select **New Link...**

Refer to the following screen capture for Steps 7 through 11.



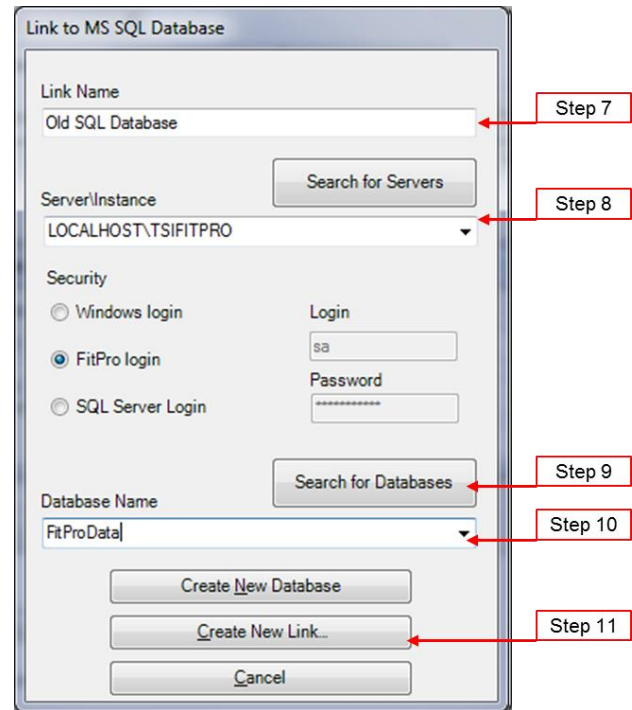
7. Enter in a name for this new link, for example “Old Database” or “SQL Database”

Refer to the [Locating a FitPro v2 & FitPlus3 Database](#) section of this document before proceeding.

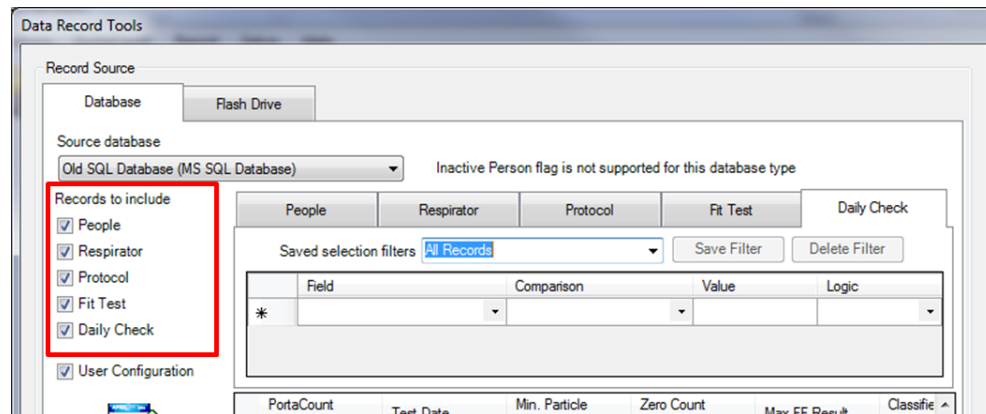
8. **IF...** the FitPro v2 database is located on the host (local) computer simply type “LOCALHOST\TSIFITPRO” into the Server\Instance field and continue to Step 9.

IF... the FitPro v2 database is located on a shared drive, server, or other computer on a network then click on **Search for Servers**.

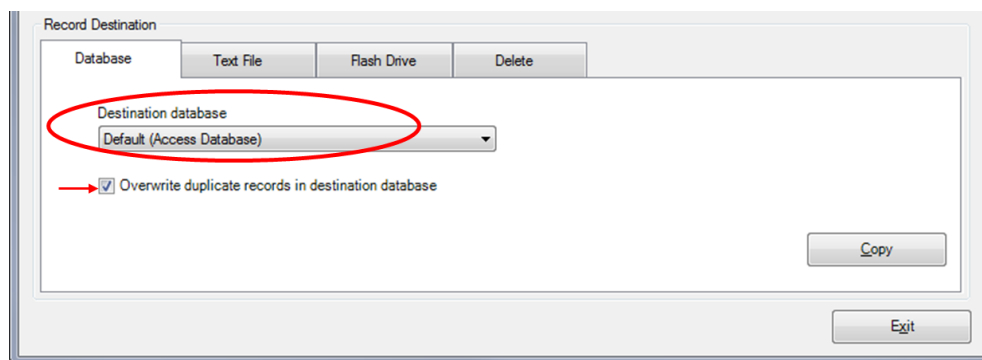
Select the appropriate Server\Instance in the drop down menu. It can also be typed into the Server\Instance field if it’s known already. Contact your IT department if you cannot determine the correct server name. The instance name remains “TSIFITPRO”.



9. Click on **Search for Databases**. All available databases located on the selected Server/Instance will appear in the drop down.
10. Select the appropriate FitPro v2 database. For example, if selecting the default FitPro v2 database you would select “FitProData” as appears in the example above.
11. Click **Create New Link...** *This will bring you back to the Data Record Tools window*
12. The Source database listed will now be the older FitPro v2 database using the Link Name you had selected. Select from the appropriate tables, or “Records to include”. People, Respirator, and Protocol are selected by default, but we recommend you include the Fit Test and Daily Check records as well, as the example below shows.



13. In the “Record Destination” section, under the Database tab, click the Destination Database drop down and select the **Default (Access Database)** or use the <New Link...> option to create a new FitPro+ database. Refer to Chapter 4 in the FitPro+ User’s Manual for more detailed information on creating a new link.



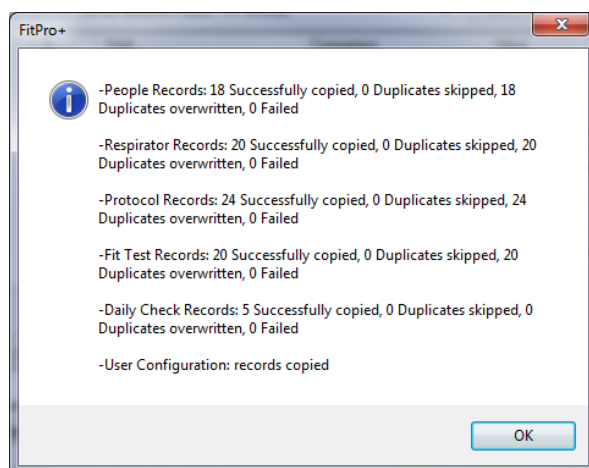
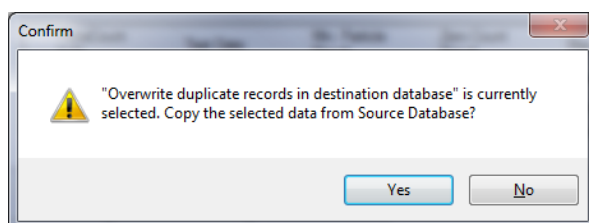
14. Select “**Overwrite duplicate records in destination database.**”

15. Click **Copy.**

16. Select **Yes.**

You will then see a Copy Status window appear as the records are copied from the older FitPro v2 database into the FitPro+ database.

17. Click **OK** when the copying (importing) is complete.



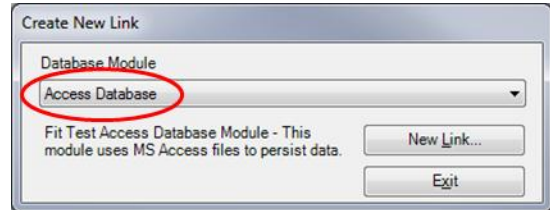
Importing Data from a FitPlus3 Database

Note

Even though the FitPro+ v3.0, v3.1, and v3.2 software and the older FitPlus3 software both use a Microsoft® Access® database, you must still convert the FitPlus3 database into the newer FitPro+ database format.

FitPlus3 and FitPro+ v3.0, v3.1, and v3.2 software can coexist. Installing FitPro+ software and converting FitPlus3 databases to the FitPro+ software format does not alter your FitPlus3 software installation in any way.

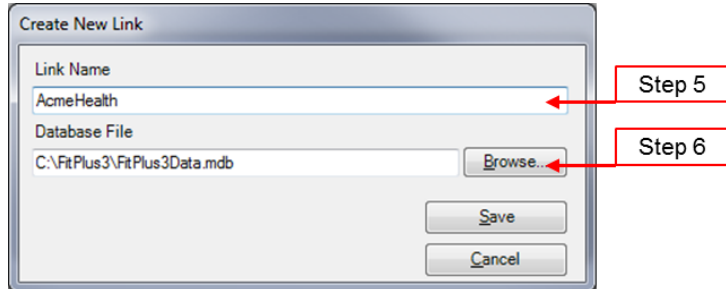
1. To begin, open the FitPro+ v3.0, v3.1, or v3.2 Fit Test Software.
2. Select **Database | Change Active... | <New Link...>**.



3. Select **Access Database** as your Database Module.

4. Select **New Link...**

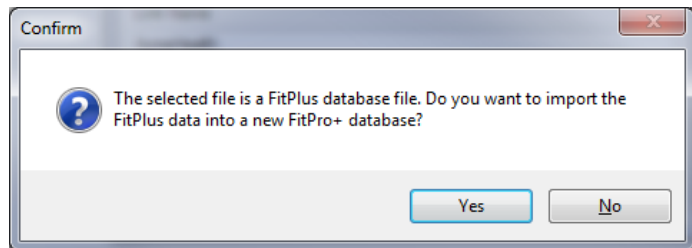
5. Enter in a Link Name of your choosing. Many people choose to name the link after their organization or location, for example "AcmeHealth"



6. Now select the older FitPlus3 database. Click on **Browse** to navigate to the appropriate FitPlus3 database. The default FitPlus3 database is usually in the C:\FitPlus3 folder and is named "FitPlus3Data".

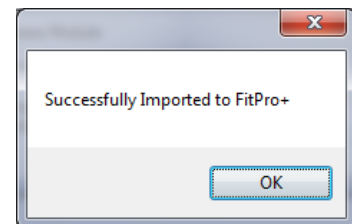
7. Select **Save**.

8. Select **Yes**.



9. A Copy Status window will appear as the records are imported from the older FitPlus3 database into a new FitPro+ database.

10. Click **OK**.



Note

Converting a database from FitPlus3 software will result in creating a new FitPro+ v3.0, v3.1, or v3.2 database. This new database location is automatically set to the local (host) computer in the default FitPro+ software database folder. If you want this new FitPro+ database located on a shared drive use the Data Record Tools function to copy the database to the preferred shared location after completing this import procedure. For more detailed information refer to Chapter 4. "Database Management and Operation" in the FitPro+ Software User's Manual.

For additional information on PortaCount Pro/Pro+ Fit tester, FitPro+ v3.0, v3.1, or v3.2 Fit test Software operations please refer to the PortaCount Academy website www.tsi.com/PCacademy.



UNDERSTANDING, ACCELERATED

TSI Incorporated – Visit our website www.tsi.com for more information.

USA	Tel: +1 800 874 2811	India	Tel: +91 80 67877200
UK	Tel: +44 149 4 459200	China	Tel: +86 10 8219 7688
France	Tel: +33 1 41 19 21 99	Singapore	Tel: +65 6595 6388
Germany	Tel: +49 241 523030		